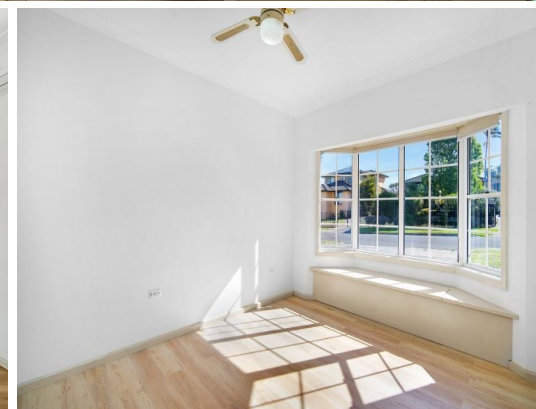


STONE



9 Marchant Crescent Mount Warrigal, NSW



### The perfect family abode

This timeless and infinitely flexible quality home is superbly located in a quiet family enclave only moments from all that the Illawarra has to offer. Enjoying a large family orientated floorplan with multiple living areas, entertainers backyard with quality appointments throughout, this is a must see.

**Price:** \$525 per week

**Bond:** \$2,100

**Available Date:** 19/10/2020



**Darnell Haselau**

0426 400 240



**Sophie Pellegrino**

0422 654 598