

34 Peacock Street Seaforth, NSW

3

2

2

Spacious family home with views

Set on 720.8sqm with terraced lawns and a perfect north rear aspect, this weatherboard classic is set to panoramic views that sweep the district all the way to wide ocean horizons. Readymade for family living yet screaming to be fully capitalised, it presents a golden opportunity to design and fashion a luxurious family residence (STCA) in a premier "walk-to-everything" address.

Price: \$2,350,000



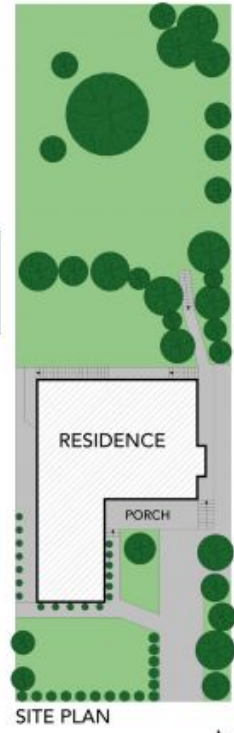
Eddy Piddington

0414 333 907



Tim Mumford

0421 942 693



The site plan and floor plan are not to scale, measurements are indicative and in meters. Roads and trees are placed for illustration purposes. Plans should not be relied on. Interested parties should make and rely on their own enquiries. All other information provided has been collected from reliable sources but cannot be guaranteed for accuracy.

34 Peacock Street, Seaforth





LOWER GROUND LEVEL



GROUND FLOOR

The floor plan is not to scale, measurements are indicative and not exact. All features included in this 3D plan are for inspiration purposes only. This is not an exact replica of the property or the position of exterior elements. Plans should not be relied on. Interested parties should make and rely on their own enquiries.

34 Peacock Street, Seaforth



STONE