

157 Pennant Parade Epping, NSW 5 3 2

### Great Double Brick Duplex - Epping West Public Zone

SOLD 1ST OPEN HOME - JAMES KWON 0414 9888 91

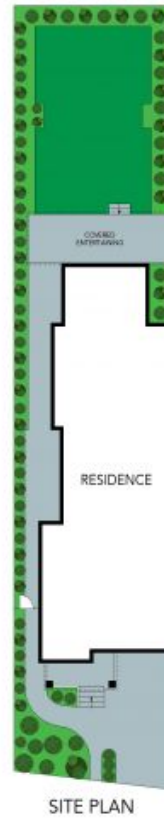
This modern double brick duplex is being offered for the first time by the owner and showcases a high level of quality, perfect for family living. Presenting exceptional space and comfort, this oversized home boasts a spacious and functional layout equipped with multiple living spaces, whilst adorned with sleek contemporary finishes with house-like proportions and idyllic near level backyard. Exceptionally located just moments from Epping West Primary School, Carlingford High School, local parks. A stroll to Carlingford Shopping Centre and Carlingford Village.

**Price:** SOLD  
**Council Rates:** \$429.60 p/q  
**Water Rates:** \$147.31 p/q



**James Kwon**

0414 988 891



The floor plan is not to scale; measurements are indicative and in metres. Exterior elements are not in position. Plans should not be relied on. Interested parties should make and rely on their own enquiries.

157 Pennant Parade, Epping

