



15 Circulo Drive Copacabana, NSW

3 2 1

Inspirational beach & lake views

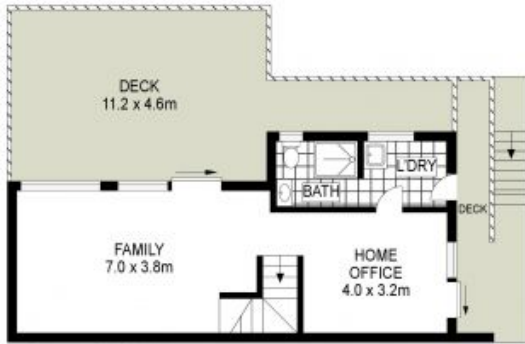
Boasting inspirational beach and lake views, this tightly held family weekender presents a fantastic opportunity to secure your own piece of paradise. Set in a prime location within an easy 10 minute walk to the beach, the property also features dual living spaces over two levels, both of which enjoy direct views of the beach and leafy surrounds. The cathedral ceilings perfectly add to the sense of space and architectural style, and both levels offer wide rear decks for entertaining, while the master bedroom will have you gazing out across the lake every morning.

Price: Contact agent
Council Rates: \$1,889.06/year (approx)
Water Rates: \$699.36/year (approx)

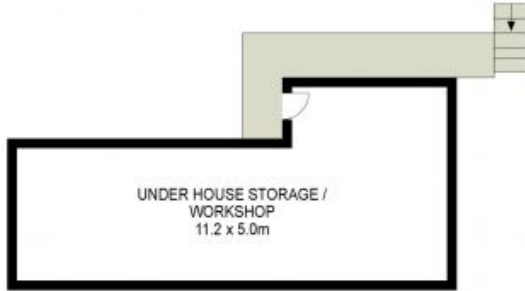


Andrew Thomson

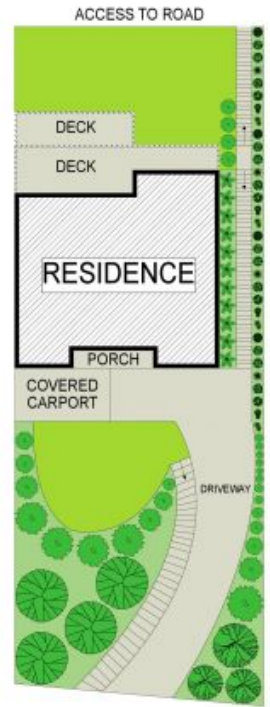
0405 103 077



LOWER GROUND



GROUND FLOOR



SITE PLAN



Scale in metres. Indicative only. Dimensions are approximate. All information contained herein is gathered from sources we believe to be reliable. However, we cannot guarantee its accuracy and interested persons should rely on their own enquiries.

INT: 158 m²
EXT: 70 m²



15 Circulo Drive, Copacabana