



252 Albany Road Petersham, NSW

6 2 1

A blank canvas offers vast untapped potential

Probably the worst house in the street, this extremely dilapidated freestanding residence presents a great opportunity for those with creative vision and determination. It sits on a generous dual access block and is completely unliveable as is yet promises extraordinary prospects for a major transformation or complete renewal or continue to use as a boarding house. Either way, it represents a unique chance to capitalise on what is one of the last remaining original homes in this premium street on the Stanmore border.

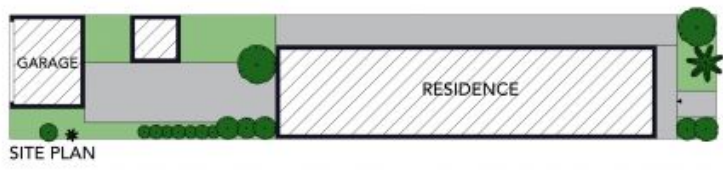
Price:

Contact Agent

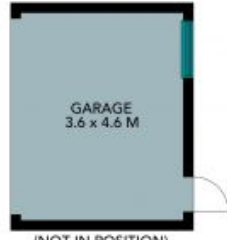


Adrian Vassallo

0406 484 994



SITE PLAN



(NOT IN POSITION)



1ST FLOOR



GROUND FLOOR

The site plan and floor plan are not to scale, measurements are indicative and in metres. Bushes and trees are placed for illustration purposes. Plans should not be relied on. Interested parties should make and rely on their own enquiries. All other information provided has been collected from reliable sources but cannot be guaranteed for accuracy.

252 Albany Road, Petersham





The floor plan is not to scale, measurements are indicative and in metres. All features included in this 3D plan are for inspiration purposes only. This is not an exact replica of the property or the position of exterior elements. Plans should not be relied on. Interested parties should make and rely on their own enquiries.

252 Albany Road, Petersham

