



29/181-185 Pacific Highway Roseville, NSW

2 2 1

Spacious 2 bedroom apartment in prime location

Bright, spacious and ticking the boxes, this 2 bedroom unit is located in a well maintained complex and in a great location. Just a short stroll to Roseville station, schools, shops and local cinema.

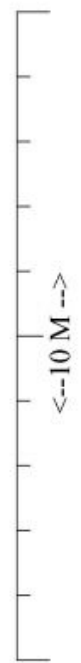
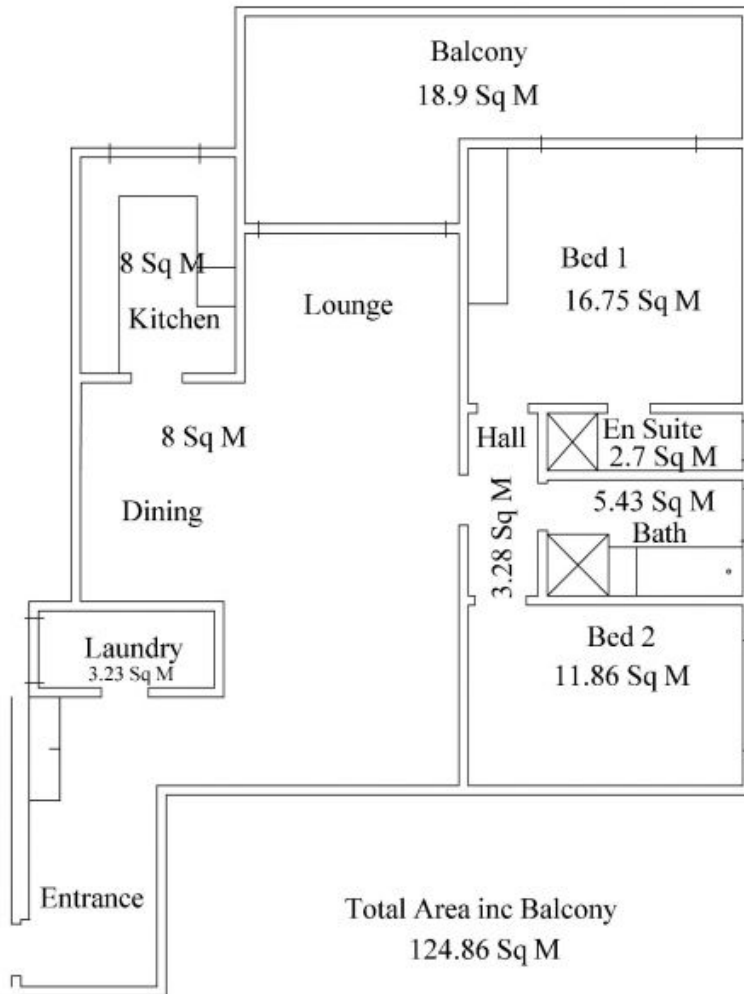
Price: DEPOSIT TAKEN
Available Date: 11/11/2020



Annabelle Morris
0429 028 588



Max Ma
0468 398 868



Total Area inc Balcony
124.86 Sq M

Unit 29

181 Pacific Hwy. Roseville

Ceiling Height 2.41 m

Lounge/Dining/Entrance = 48.15 Sq M

Bed 1 = 16.75 Bed 2 = 11.86 Hall = 3.28

Total Carpet = 80.04 Sq M or @ 3.6m = 22.33 Lineal Meters