

4/23 View Street Camden, NSW

2 2 2

Gorgeous Terrace in the heart of Camden

Property's like this don't come along often!
This unique terrace style home features the following;

Price: \$460 pw
Bond: \$2,000
Available Date: 12/11/2020



Tara Rogers

02 4655 3000



Tara Rogers

02 4655 3000



UPPER LEVEL



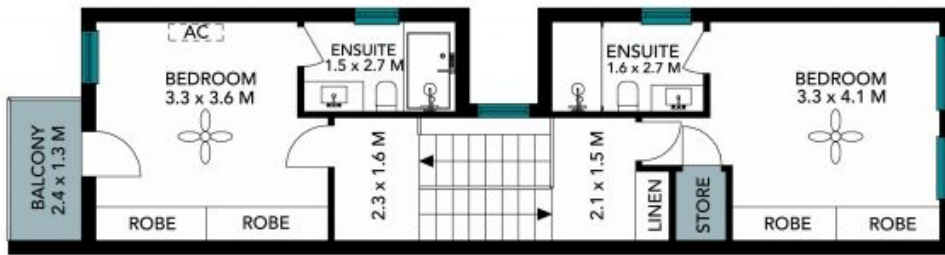
ENTRY LEVEL

The floor plan is not to scale, measurements are indicative and in meters. All features included in this 3D plan are for inspiration purposes only. This is not an exact replica of the property or the position of exterior elements. Plans should not be relied on. Interested parties should make and rely on their own enquiries.

4/23 View St, Camden



STONE



UPPER LEVEL



ENTRY LEVEL

The floor plan is not to scale, measurements are indicative and in metres. Exterior elements are not to position. Plans should not be relied on. Interested parties should make and rely on their own enquiries. All other information provided has been collected from reliable sources but cannot be guaranteed for accuracy.

