

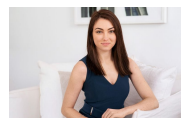
1.103/18 Hannah Street Beecroft, NSW



Large courtyard apartment, sunny and stylish

Modern and spacious, the 'Beecroft Place' residence is located in the heart of the suburb. Literally moments from shops, cafe's, city buses and Beecroft Station.

Price: Deposit Taken!
Bond: \$1,520
Available Date: 05/12/2020



Sarah Hastings

02 8893 2218