



W101/8-28 The Corso Manly, NSW



### Unbeatable beach pad in heart of Manly

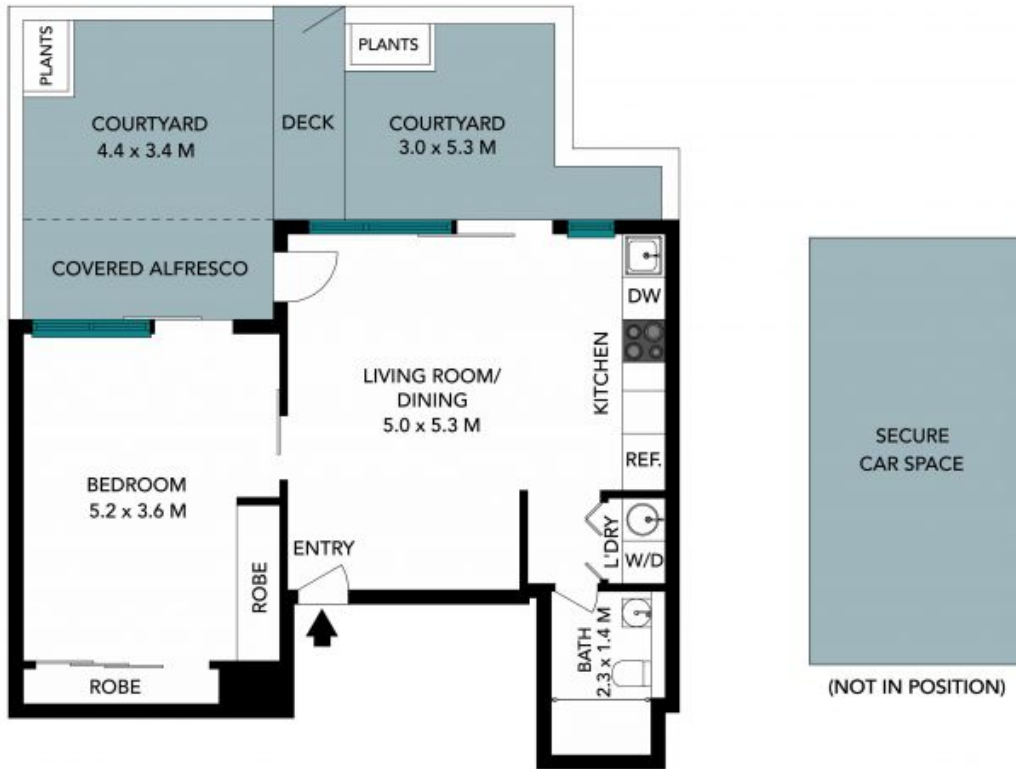
Peacefully positioned towards the rear of the sought-after 'Corsoleil' security building right on the iconic The Corso, this state-of-the-art apartment offers the ultimate mix of luxury and lifestyle. A sleek showcase of streamline contemporary design with premium appointments and a giant tranquil north facing courtyard, it is literally footsteps to supermarkets, cosmopolitan eateries, Manly Wharf and a choice of beaches.

**Price:** Holding deposit taken  
**Bond:** \$3,040  
**Available Date:** 05/12/2020



**Zoe Thackeray**

0449 167 420



The floor plan is not to scale, measurements are indicative and in metres. Exterior elements are not in position. Plans should not be relied on. Interested parties should make and rely on their own enquiries. All other information provided has been collected from reliable sources but cannot be guaranteed for accuracy.

W101/8-28 The Corso, Manly

STONE



The floor plan is not to scale, measurements are indicative and in metres. All features included in this 3D plan are for inspiration purposes only. This is not an exact replica of the property or the position of water for elements. Plans should not be relied on. Interested parties should make and rely on their own enquiries.

W101/8-28 The Corso, Manly



STONE