

15/11-15 Robilliard Street Mays Hill, NSW 2 2 1

Contact Agent for a Private Inspection

Located on the first floor of a secure, boutique block is this spacious two bedroom apartment. Boasting modern interiors, a well considered layout and loads of natural light, the apartment is positioned in a quiet street only 1.5km (approx) to Parramatta CBD.

Price: \$525,000



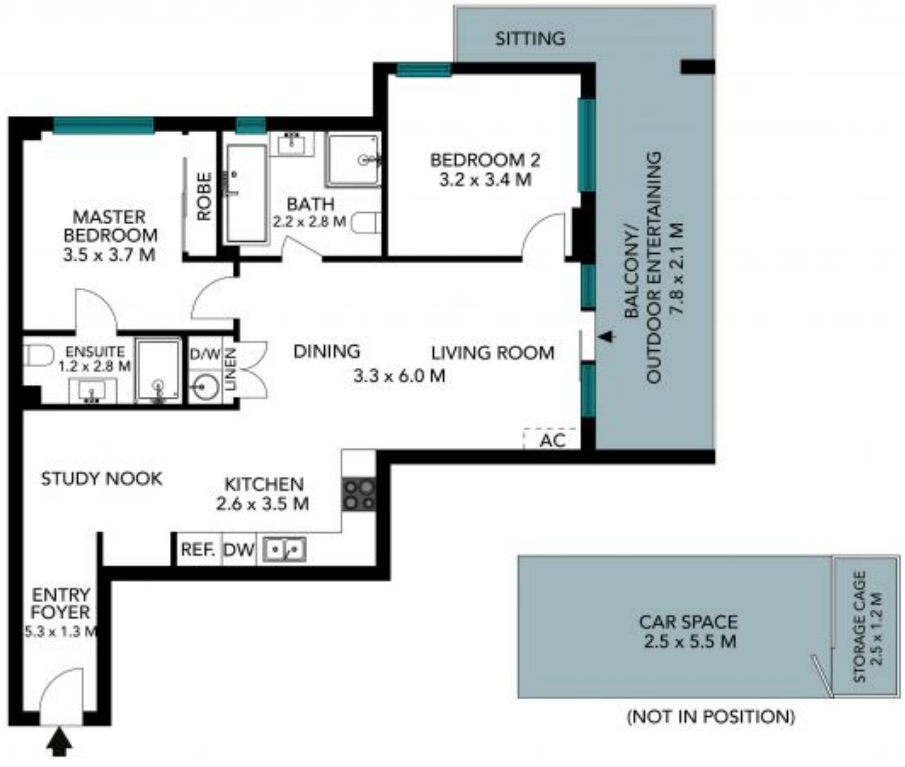
Andrea Sant

0404 872 125



Adam Denina

0413 546 713



The floor plan is not to scale; measurements are indicative and in metres. Exterior elements are not in position. Plans should not be relied on. Interested parties should make and rely on their own enquiries. All other information provided has been collected from reliable sources but cannot be guaranteed for accuracy.

107/11-15 Robilliard St, Sydney





The floor plan is not to scale, measurements are indicative and in metres. All features included in this 3D plan are for inspiration purposes only. This is not an exact replica of the property or the position of exterior elements. Plans should not be relied on. Interested parties should make and rely on their own enquiries.

107/11-15 Robilliard St, Sydney

