



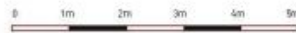
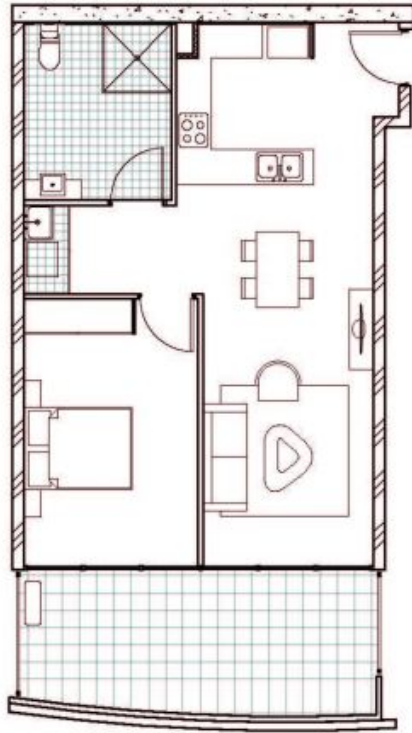
1207/23 Hassall Street Parramatta, NSW



## The Galleria

Built and ready to occupy we have a selection of award-winning, stylish appointed 1, 2 & 3 bedroom apartments enjoying one of the finest, most convenient locations in Sydney's second largest CBD. The Galleria puts you front row centre for the exceptional growth, gentrification, and cultural change that Parramatta is currently experiencing.

**Price:** Sold  
**Strata Rates:** \$780.00 p/q



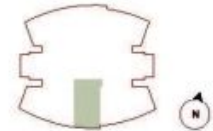
**THE GALLERIA**  
BY NUCORP

113-117A WIGRAM STREET  
& 23-29 HASSALL STREET  
PARRAMATTA

**UNIT 908**  
1008 / 1108 / 1207



LEVEL	9, 10, 11, 12
INTERNAL	58m <sup>2</sup>
EXTERNAL	11m <sup>2</sup>
TOTAL	69m <sup>2</sup>



Disclaimer: please note that this layout plan was produced prior to construction. Changes may be made during construction and alterations, areas, fittings, finishes and specifications are subject to change without notice in accordance with the provisions of the contract for sale. The furniture and fittings depicted are not included in any sale and purchaser must refer to their contract for sale for the list of inclusions. The position of the furniture and fittings should not be taken to be indicative of the position of power points, or connection points and the like. Prospective purchasers must rely on their own enquiries. All graphics including this layout and floor plan are for illustrative purposes only. No liability for services are we depicted.