

11/3 Suttor Road Moss Vale, NSW



### Easy living

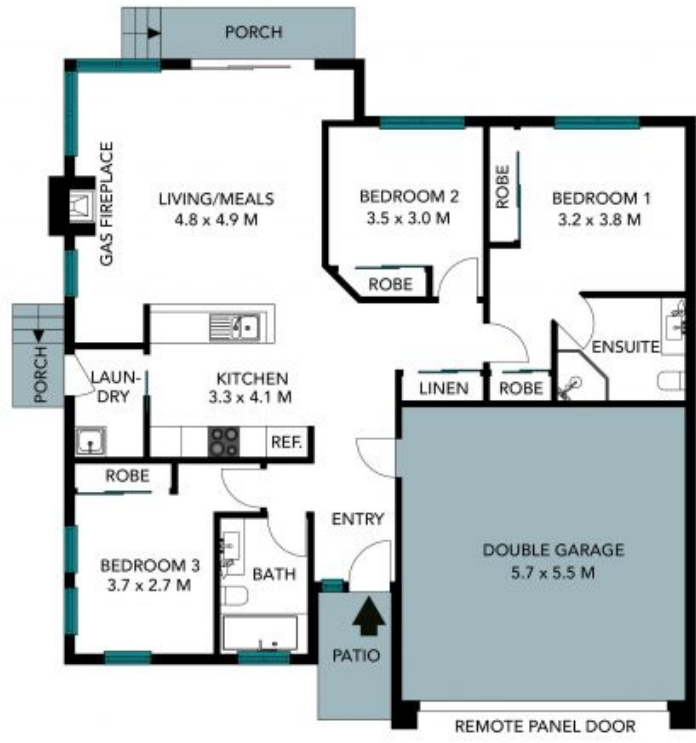
Perfectly positioned in the popular 'Tatton Park' complex, this stylish, contemporary villa is the epitome of easy living. Thoughtful single level design, the light-filled residence offers a beautiful blend of indoor and outdoor living. The low maintenance pad ? curated for retirees, young professionals or easy entertainers ? represents true value for the astute investor. And if that's not enough, you'll be in close proximity to the vibrant energy of Moss Vale, with eclectic shops and cafes.

**Price:** \$600,000  
**Council Rates:** \$1,548.00/year (approx)  
**Water Rates:** \$1,025.00/year (approx)



**Anita Roelevink**

0409 367 678



The floor plan is not to scale, measurements are indicative and in metres. Exterior elements are not in position. Plans should not be relied on. Interested parties should make and rely on their own enquiries. All other information provided has been collected from reliable sources but cannot be guaranteed for accuracy.

11/3 Suttor Road, Moss Vale





The floor plan is not to scale, measurements are indicative and in metres. All features included in this 3D plan are for inspiration purposes only. This is not an exact replica of the property or the position of exterior elements. Plans should not be relied on. Interested parties should make and rely on their own enquiries.

11/3 Suttor Road, Moss Vale

