



93a Boundary Street Roseville, NSW



### Effortless modern lifestyle in prime school zones

Quietly positioned to the rear, this modern two-storey Torrens-title duplex offers outstanding interior space, a generous level north to rear garden and a large covered deck perfect for kicking-back with family and friends. Impressively designed, ideal as a first family home with all bedrooms upstairs. The central location includes quality school zones and easy transport to Greater Sydney.

Price:

Contact Agent



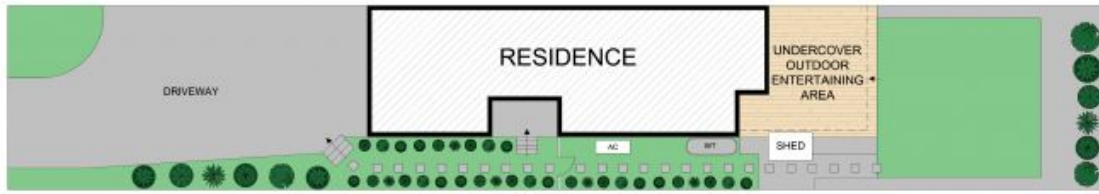
**Jill Henry**

0416 493 555



**Sahil Kotian**

0434 172 588



SITEPLAN



FIRST LEVEL



GROUND LEVEL

Scale in metres. Indicative only. All information contained herein is obtained from sources we believe to be accurate. We cannot guarantee its accuracy. Interested persons should make and rely on their own enquiries.



93A Boundary Street, Roseville

STONE