



38 Roseville Avenue Roseville, NSW

4  2  2 

Charming bungalow in a privileged pocket

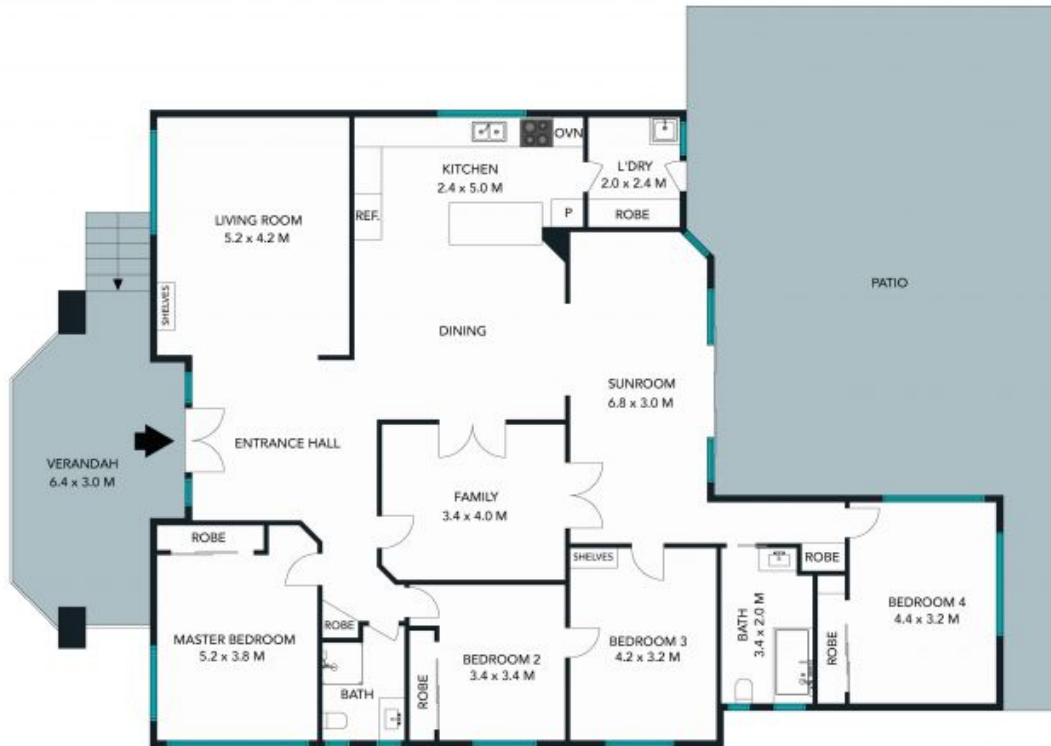
This charming Californian bungalow in a prime location represents an opportunity to secure a comfortable family home in a superb location.

Price: Deposit Taken pw
Bond: \$4,800
Available Date: 19/12/2020



Lisa Quealy

0415 755 587



The floor plan is not to scale, measurements are indicative and in metres. Exterior elements are not in position. Plans should not be relied on. Interested parties should make and rely on their own enquiries.



38 Roseville Avenue, Roseville

STONE



The floor plan is not to scale, measurements are indicative and in metres. All features included in this 3D plan are for inspiration purposes only. This is not an exact replica of the property or the position of exterior elements. Plans should not be relied on. Interested parties should make and rely on their own enquiries.

38 Roseville Avenue, Roseville

