



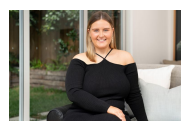
109/710 Military Road Mosman, NSW



Oversized luxury apartment in the heart of Mosman ?
Parking available

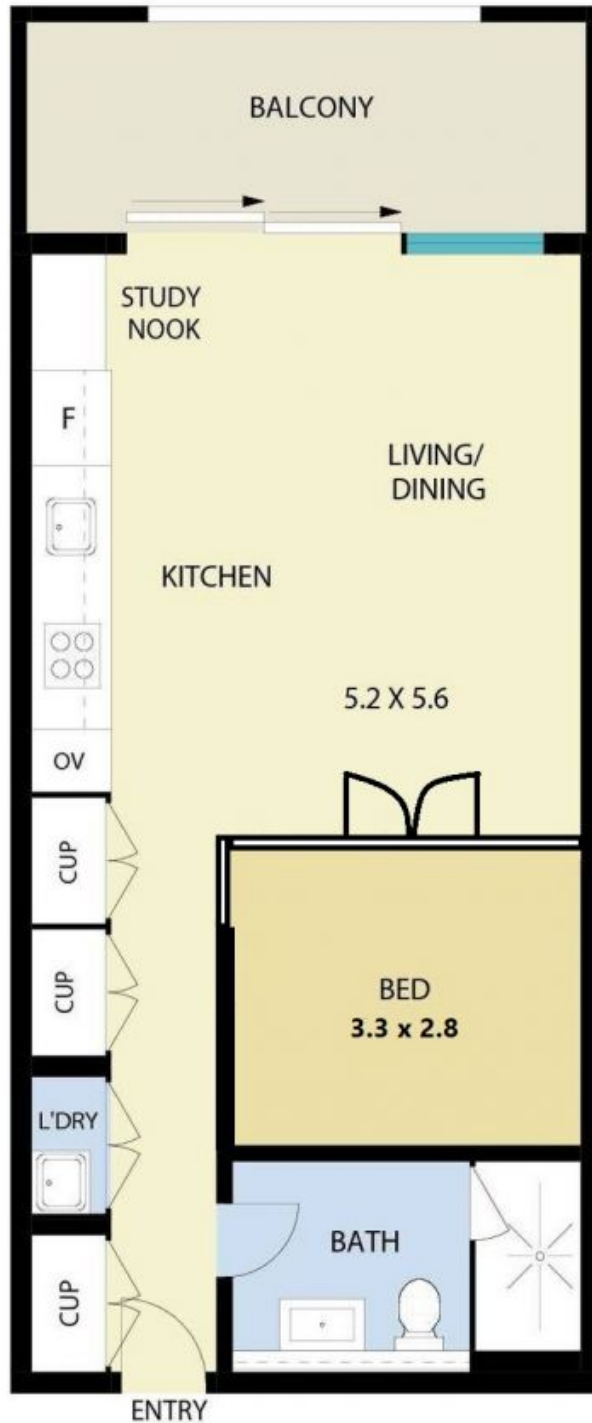
FLEXIBLE LEASE TERMS AVAILABLE

Price: \$630 pw
Available Date: 18/12/2020



Ellie McClenaghan

0479 129 887



LEVEL ONE



109/710 Military Road, Mosman

Floor Plan Disclaimer: Mind the Gap (mtg) floor plans / site plans are intended as an approximate guide only. No representations or warranties of any nature are given or intended and any person using this information other than as a guide should always rely on their own enquiries. Mind the Gap property marketing services / 1300 133 145 / Photography, Floor plans, Copywriting, Video, Design.