



327/28 Bonar Street Arncliffe, NSW



### Oversized two-bedder plus study and large terrace

Enjoy house-like proportions and an abundance of outdoor space, all in a low-maintenance resort-style complex. A wrap-around terrace oriented to the north-east sets this newly built unit apart, with all rooms offering a relaxed indoor-outdoor flow. Enjoy open-plan living and walk to both Arncliffe and Wolli Creek Station, shops and dining from this ultra-convenient locale.

**Price:** \$799,000  
**Council Rates:** \$347.00 p/q  
**Water Rates:** \$147.00 p/q  
**Strata Rates:** \$1,060.00 p/q



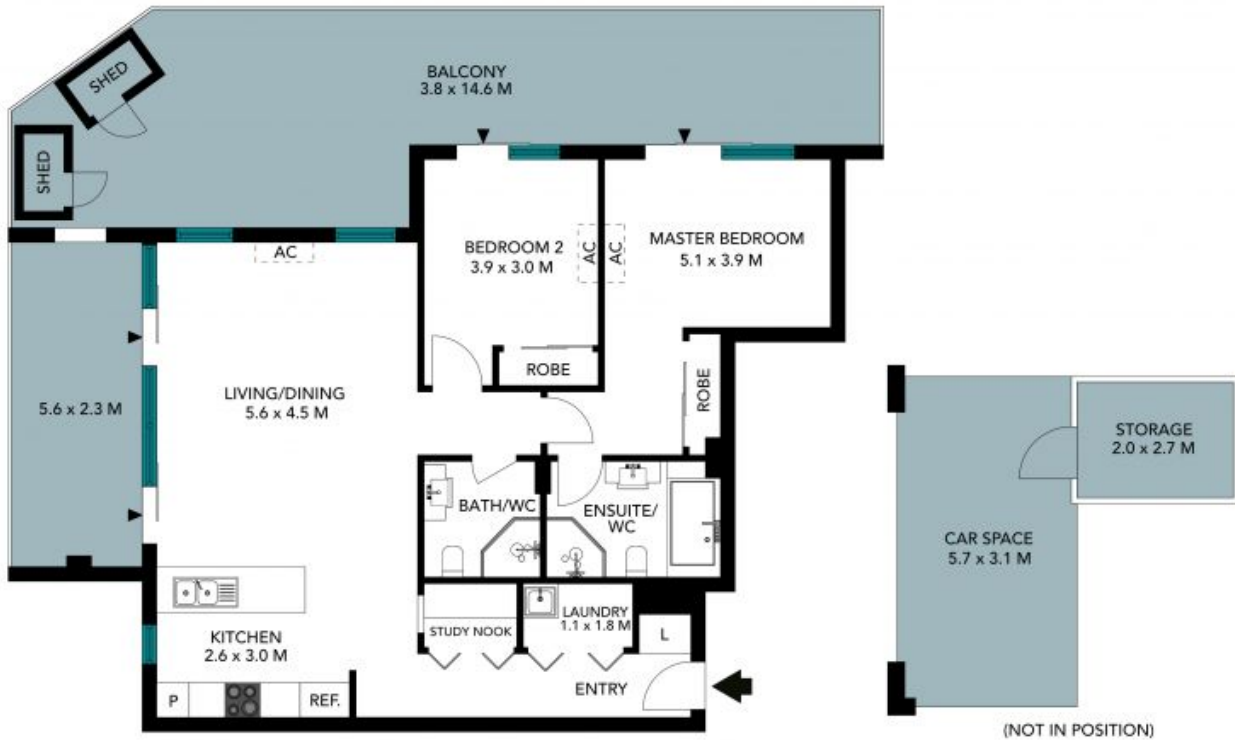
**Sam Abbas**

0406 750 075



**George Kambouroglou**

0422 421 111



The floor plan is not to scale, measurements are indicative and in metres. Colour statements are not to position. Plans should not be relied on. Interested parties should make and rely on their own enquiries. All other information provided has been collected from reliable sources but cannot be guaranteed for accuracy.



327/28 Bonar Street, Arncliffe





The floor plan is not to scale, measurements are indicative and in metres. All features included in this 3D plan are for inspiration purposes only. This is not an exact replica of the property or the position of exterior elements. Plans should not be relied on. Interested parties should make and rely on their own enquiries.

327/28 Bonar Street, Arncliffe

