



10A Wilson Crescent Narellan, NSW 3 1 1

### Deposit taken

Wilson Crescent Narellan.. Have you heard of it? Many have, but if not we'll share with you what it has to offer. Its one of Narellan's most popular streets with easy access to Studley Park golf course, walking distance to Narellan Town Centre and a short drive into Camden to enjoy that change of pace we all need at times. The property offers a low maintenance lifestyle with minimal upkeep yet expansive living areas which provides plenty of room to move and to invite friends and family to visit. Home buyers or investors are sure to like this property, please contact us for a viewing or attend our scheduled showing as this one won't last long at all.

**Price:** \$630,000



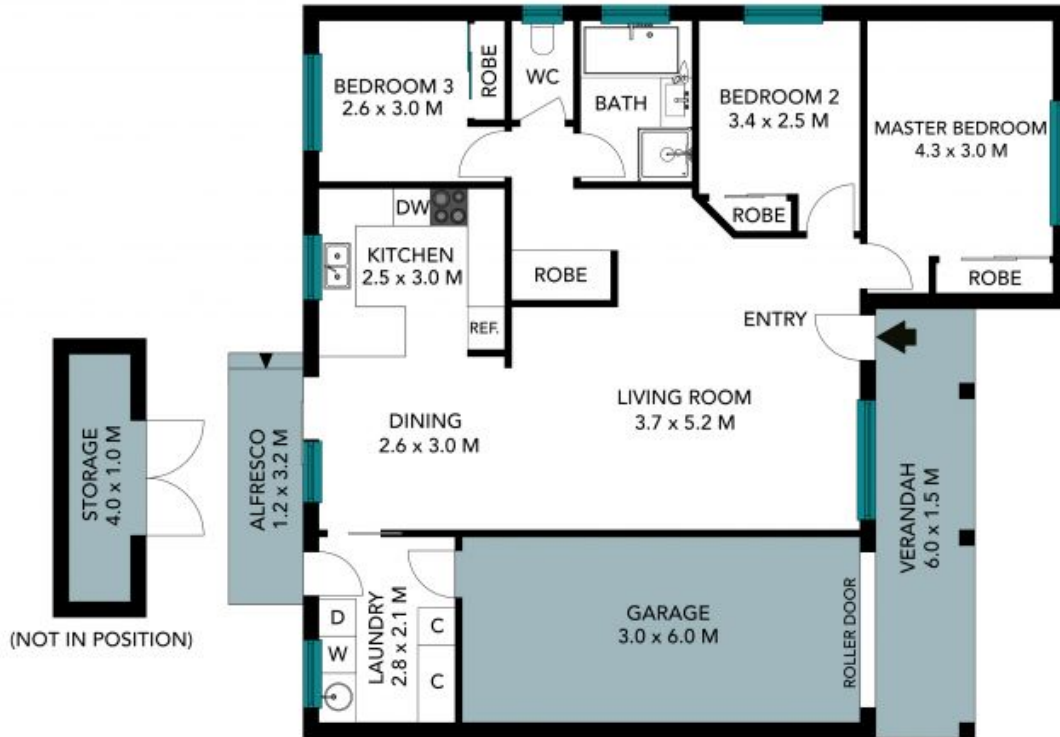
**Chris Philp**

0418686511



**Chris Philp**

0418686511



The floor plan is not to scale, measurements are indicative and in metres. Solar/or elements are not in position. Plans should not be relied on. Interested parties should make and rely on their own enquiries. All other information provided has been collected from reliable sources but cannot be guaranteed for accuracy.



10A Wilson Cres, Narellan





The floor plan is not to scale, measurements are indicative and in metres. All features included in this 3D plan are for inspiration purposes only. This is not an exact replica of the property or the position of exterior elements. Plans should not be relied on. Interested parties should make and rely on their own enquiries.

10A Wilson Cres, Narellan

