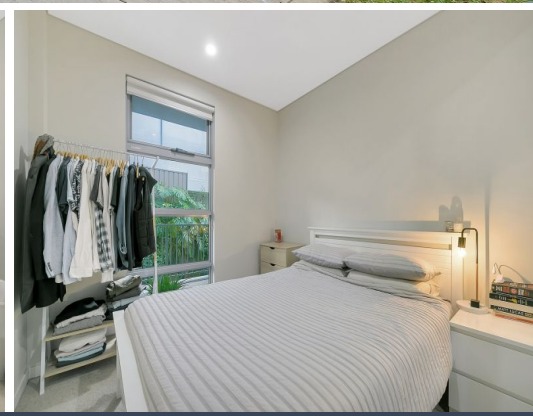
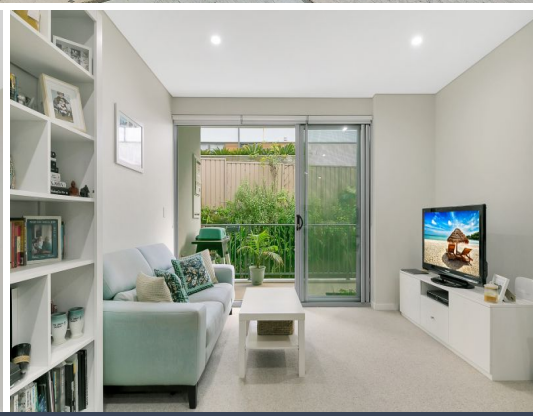
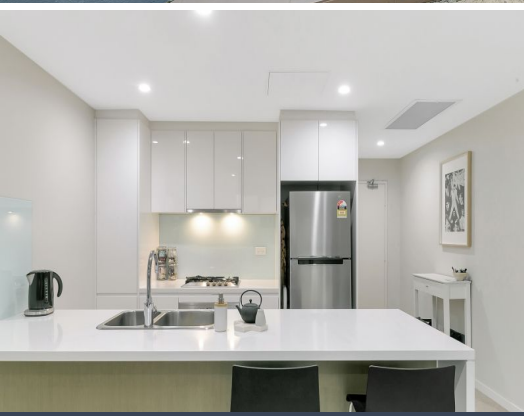




Gardenia
LANE COVE
62-70 Gordon Crescent



37/62 Gordon Crescent Lane Cove North, NSW

1 1 1

Designer apartment in a private, leafy setting

This modern apartment in the ultra-contemporary 'Gardenia' building fuses sophisticated urban design, premium finishes and versatile open plan layout complete with a large balcony. Minutes walk from local village shops and Mowbray Road buses to the city and Chatswood, the apartment is surrounded by acres of urban parkland.

Price: Deposit Taken - \$450 per week
Available Date: 08/02/2021



Sarah Hastings
02 8893 2218