

21/88 James Ruse Drive Rosehill, NSW



Rooftop Terrace

Located in the highly sought-after 'Pegasus' apartments, this unique multi-level residence provides an ultra-convenient lifestyle, with versatile opportunities. It's situated opposite Rosehill Gardens Racecourse, just footsteps from local shops and train station.

Price: \$530,000-\$560,000



Aaron Lih

0420 825 598

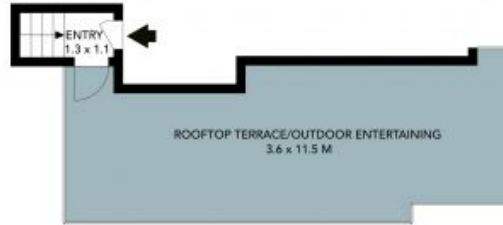


Adam Denina

0413 546 713



BASEMENT



LEVEL 5



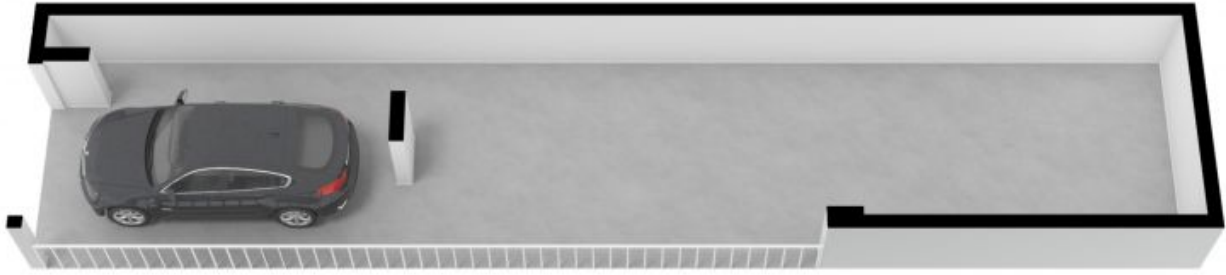
LEVEL 4



The floor plan is not to scale, measurements are indicative and in metres. Exterior elements are not to position. Plans should not be relied on, interested parties should make and rely on their own enquiries. All other information provided has been collected from reliable sources but cannot be guaranteed for accuracy.

21/88 James Ruse Drive, Rosehill





BASEMENT



LEVEL 4

The floor plan is not to scale, measurements are indicative and in metres. All features included in this 3D plan are for inspiration purposes only. This is not an exact replica of the property or the position of exterior elements. Plans should not be relied on. Interested parties should make and rely on their own enquiries.



21/88 James Ruse Drive, Rosehill

