

2 Erith Street Mosman, NSW

4

2

1

Conveniently located family home ideal for entertaining

Situated in a whisper quiet street just moments from Middle Harbour Primary School, this stylish family home boasts a spacious floorplan across one level and an ultra-convenient lifestyle. With a generous open plan kitchen and living area extending to an undercover entertaining deck and level rear yard, this home is ideal for those with children or pets.

- Open plan living and dining extends to covered entertaining deck
 - Oversized modern kitchen with island bench and stainless steel appliances
 - Large level rear garden with child and pet friendly lawn, separate side access
 - Master bedroom with built-ins and adjacent sunroom ideal for home office
 - Three additional double bedrooms, two with built-in wardrobes
 - Two full bathrooms, internal laundry, ample storage throughout
 - Polished timber floors, high ornate ceilings, plantation shutters, central heating
 - Walk to Bridgepoint Shopping Centre, transport and Middle Harbour Public School
- Single off-street parking space, pet friendly, minimum 12 month lease

Price: \$1,500 pw

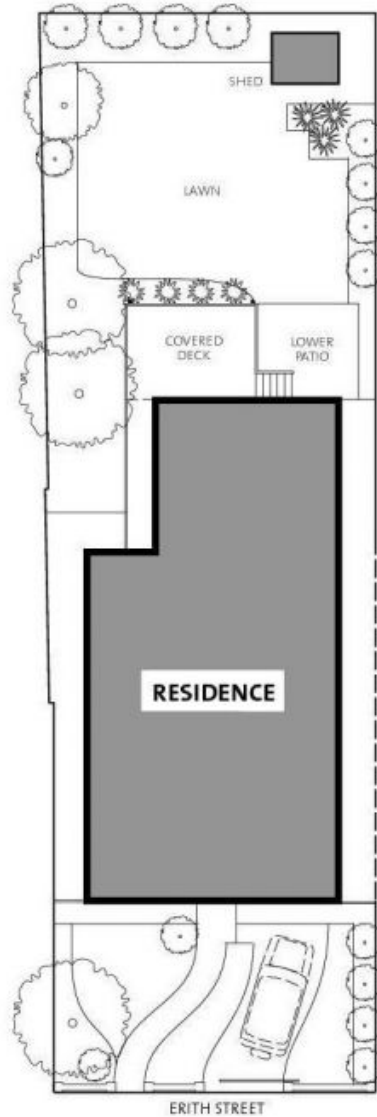
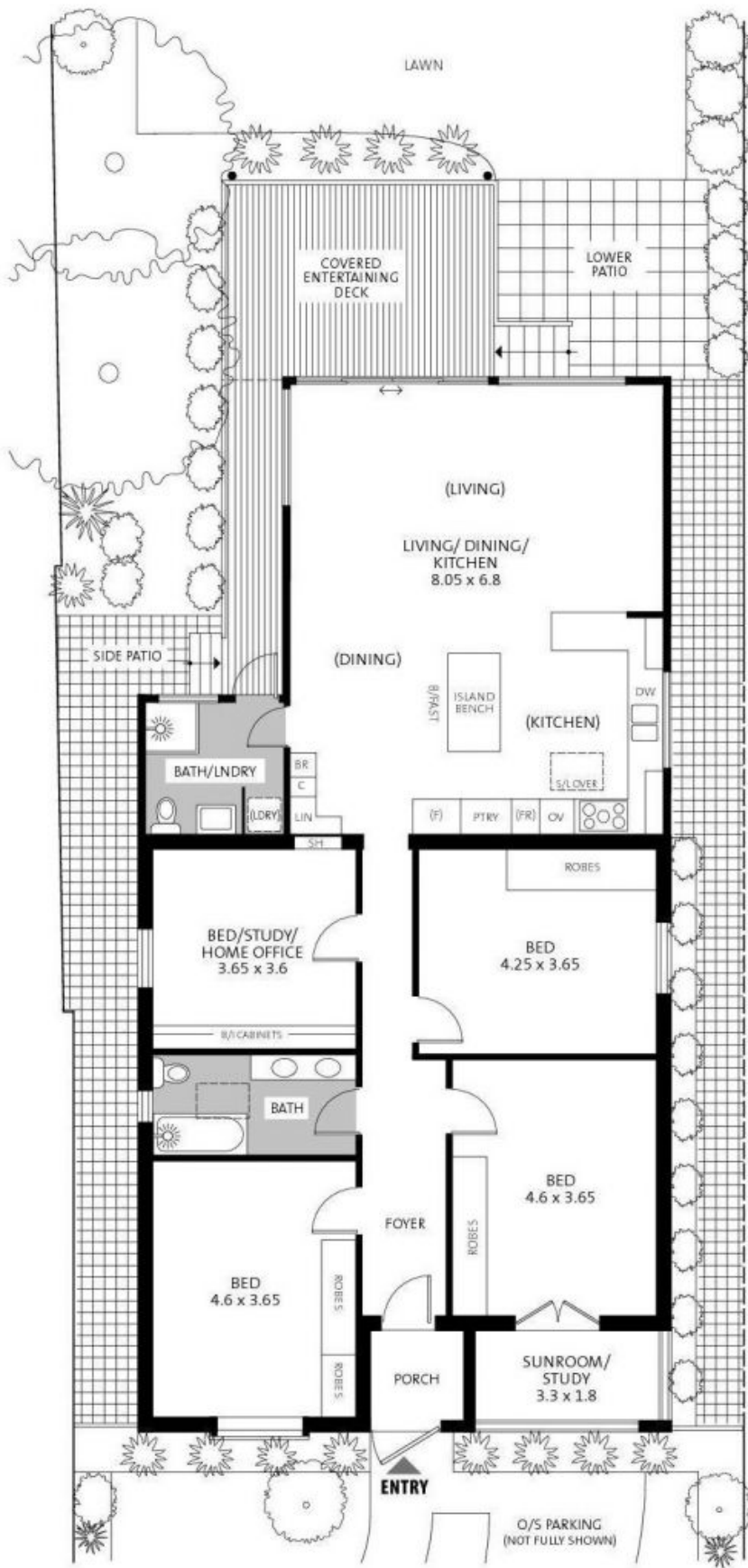
Available Date: 29/01/2021



Ellie McClenaghan

0479 129 887

Mosman 2 Erith Street



SITE PLAN
(NOT TO SCALE, APPROXIMATE LAYOUT ONLY)

APPROXIMATE SCALE GUIDE (METRES)
0 1 2 3 4



PLEASE NOTE: All dimensions are approximate, and any boundaries shown are approximate indications only. This floor plan is provided to show the layout for marketing purposes only and must not be relied upon for any other purpose. No liability will be accepted.