



59/212 Mona Vale Road St Ives, NSW



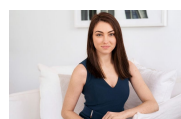
One bedroom unit in premium location

Offering the ultimate lifestyle in the highly sought after 'Rosedale' development, this superb one bedroom apartment is moments from St Ives Village, restaurants, cafes and shopping precinct.

Price: Deposit Taken!

Bond: \$1,800

Available Date: 08/02/2021



Sarah Hastings

02 8893 2218