



9 Kethel Road Cheltenham, NSW



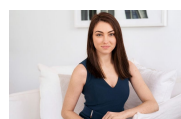
**Beautiful home in tranquil setting. Pool maintenance included.**

Deceptively large, this exceptional two story family home offers space, lifestyle and convenience. Located within walking distance to Cheltenham Station and a moments drive to Beecroft shops and cafes, while also in the catchment for sought after local schools.

**Price:** Deposit Taken!

**Bond:** \$4,400

**Available Date:** 13/02/2021



**Sarah Hastings**

02 8893 2218