



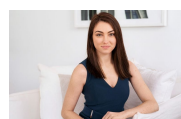
1.401/18 Hannah Street Beecroft, NSW

1 1 1

North facing one bedroom apartment

Bright, modern and spacious, the 'Beecroft Place' residence is located in the heart of the suburb. Literally moments from shops, cafes, city buses and Beecroft Station.

Price: Holding Deposit Received - \$420 per week
Bond: \$1,680
Available Date: 26/02/2021



Sarah Hastings

02 8893 2218