



38 Taronga Avenue Mount Saint Thomas, NSW 3  1  1 

Character filled home in a central location

Beautifully transformed by a tasteful renovation, this family home blends chic contemporary finishes with retained old world charm and provincial elegance. It creates a superb sense of peace and privacy with 12 feet surrounding hedges and views of the escarpment. Set on 645sqm, the property is a walk from the local caf?, Mount St Thomas Public School and Figtree shops, while handy to Wollongong CBD.

Price: \$910,000



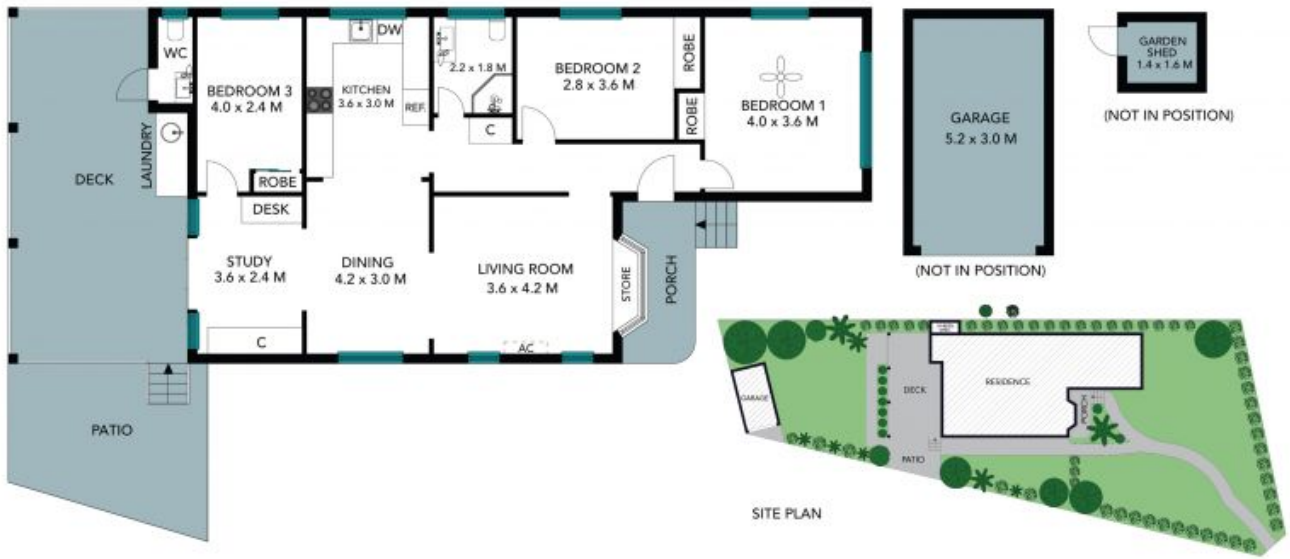
Neil Webster

0439 028 748



Yenson Mui

0421 882 541



The site plan and floor plan are not to scale, measurements are indicative and in metres. Balches and truss are placed for illustration purposes. Plans should not be relied on, interested parties should make and rely on their own enquiries. All other information provided has been collected from reliable sources but cannot be guaranteed for accuracy.

38 Taronga Avenue, Mount Saint Thomas





The floor plan is not to scale, measurements are indicative and in meters. All features included in this 3D plan are for inspiration purposes only. This is not an exact replica of the property or the position of exterior elements. Plans should not be relied on. Interested parties should make and rely on their own enquiries.

38 Taronga Avenue, Mount Saint Thomas



STONE