



8/555 Princes Highway Rockdale, NSW



### Relaxed modern living in prime location

Situated in the sought-after 'Arena' security building, moments to Rockdale Plaza shops, restaurants and the train station, this bright and spacious two-bedroom apartment on the first floor offers a low maintenance lifestyle with a central address. Modern interiors are complemented by two undercover balconies and secure parking is also included, while residents of 'Arena' enjoy access to a range of resort facilities. A perfect home or investment, its premium positioning assures everyday ease and ultra-convenience.

**Price:** SOLD \$636,000

**Council Rates:** \$257.00 p/q

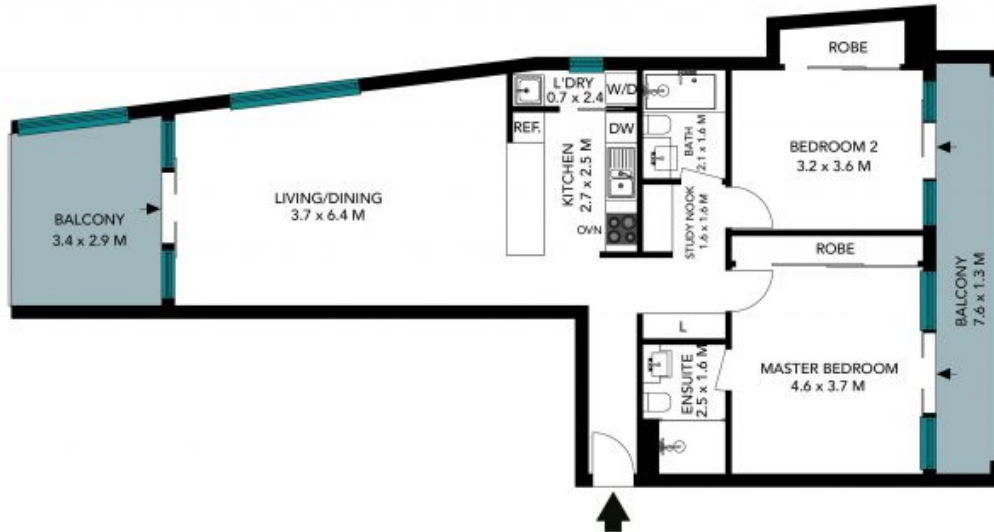
**Water Rates:** \$150.00 p/q

**Strata Rates:** \$1,330.00 p/q



**Ray Fadel**

0413 177 739



SECURE BASEMENT  
(NOT IN POSITION)



The floor plan is not to scale; measurements are indicative and in metres. Exterior elements are not in position. Plans should not be relied on. Interested parties should make and rely on their own enquiries. All other information provided has been collected from reliable sources but cannot be guaranteed for accuracy.

8/555 Princess Highway, Rockdale





The floor plan is not to scale, measurements are indicative and in metres. All features included in this 3D plan are for inspiration purposes only. This is not an exact replica of the property or the position of exterior elements. Plans should not be relied on. Interested parties should make and rely on their own enquiries.

8/555 Princess Highway, Rockdale

