



63/8 Koorala Street Manly Vale, NSW

3 2 2

Resort-like lifestyle apartment in prime location

Boasting a fabulous entertainers' terrace, on title and tranquil exclusive use lawn, this wonderfully spacious and modern security apartment provides an idyllic sanctuary for executive entertainers' or young families. Peacefully nestled within the secure gated park-like grounds of 'The Peninsula' security building with a heated pool and gym on-site, its tranquil lifestyle setting is literally footsteps from Coles Supermarket and within a few minutes stroll of cafes and the B-line city bus stop.

Price: \$1,467,500



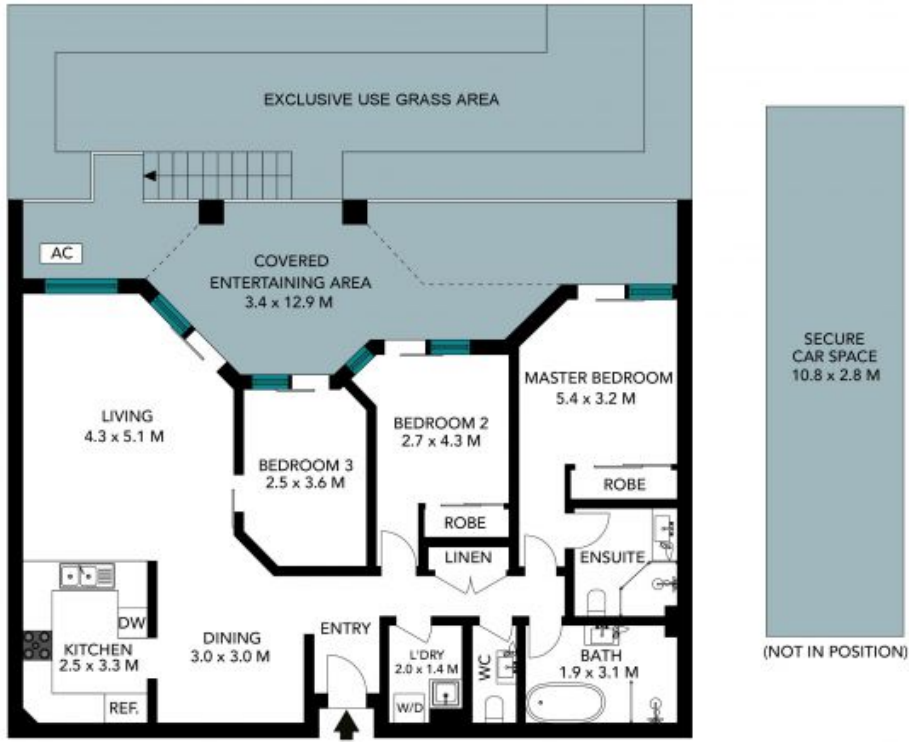
Eddy Piddington

0414 333 907



Michael Egan

0499 172 009



The floor plan is not to scale; measurements are indicative and in metres. Exterior elements are not in position. Plans should not be relied on. Interested parties should make and rely on their own enquiries. All other information provided has been collected from reliable sources but cannot be guaranteed for accuracy.

63/8 Koorala Street, Manly Vale





The floor plan is not to scale, measurements are indicative and in metres. All features included in this 3D plan are for inspiration purposes only. This is not an exact replica of the property or the position of exterior elements. Plans should not be relied on. Interested parties should make and rely on their own enquiries.

63/8 Koorala Street, Manly Vale

