

3/48 Crown Road Queenscliff, NSW 2 2 1

Ultra-chic garden retreat in prime coastal setting

Configured more like a contemporary semi with its spectacular alfresco entertaining areas and level lawn framed by tranquil gardens, this absolute premium security apartment provides an enchanting coastal sanctuary. Brilliantly designed and superbly appointed with exceptionally spacious interiors and seamless indoor/outdoor flow, its exclusive coastal address is a lazy few minutes stroll to Freshwater or Queenscliff Beach.

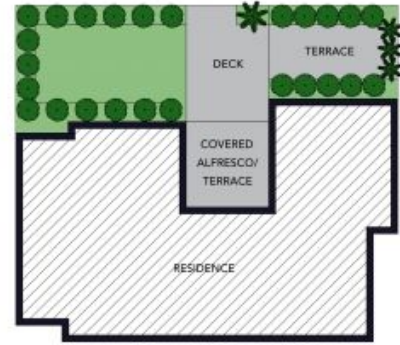
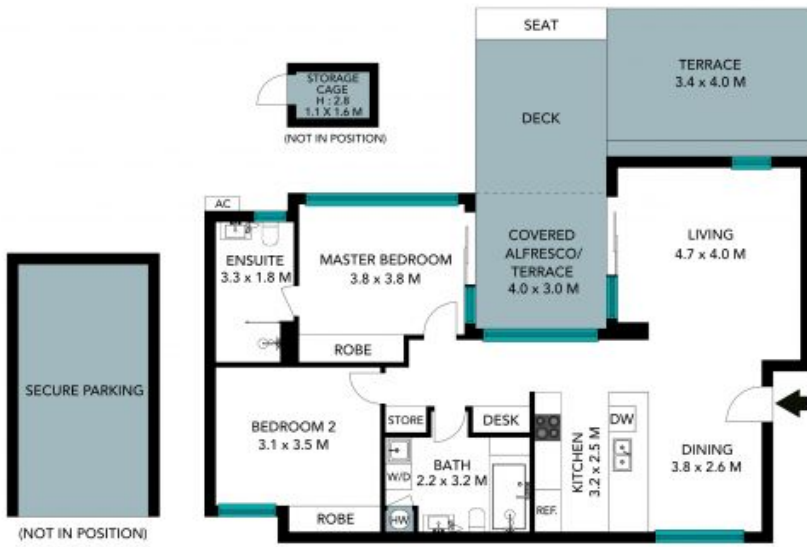
Price: \$1,870,000



Adam Moore
0428 319 096



Mark Skeens
0401 241 381



SITE PLAN



The site plan and floor plan are not to scale, measurements are indicative and in metres. Bushes and trees are placed for illustration purposes. Plans should not be relied on. Interested parties should make and rely on their own enquiries. All other information provided has been collected from reliable sources but cannot be guaranteed for accuracy.

3/48 Crown Road, Queenscliff





The floor plan is not to scale, measurements are indicative and in metres. All features included in this 3D plan are for inspiration purposes only. This is not an exact replica of the property or the position of exterior elements. Plans should not be relied on. Interested parties should make and rely on their own enquiries.

3/48 Crown Road, Queenscliff

