



14/2 Clifford Street Mosman, NSW



Modern retreat in ultra convenient locale

Positioned on the ground floor of a well-maintained development, this home enjoys a convenient location with peaceful, leafy surrounds. Immaculately kept, the open plan living flows to a private balcony, bathed in natural light with ocean glimpses. Just a short stroll to Mosman's boutique shops, Balmoral Beach, cafes, restaurants and B-Line bus transport, you are ideally positioned for a lifestyle of ease and convenience.

Price:

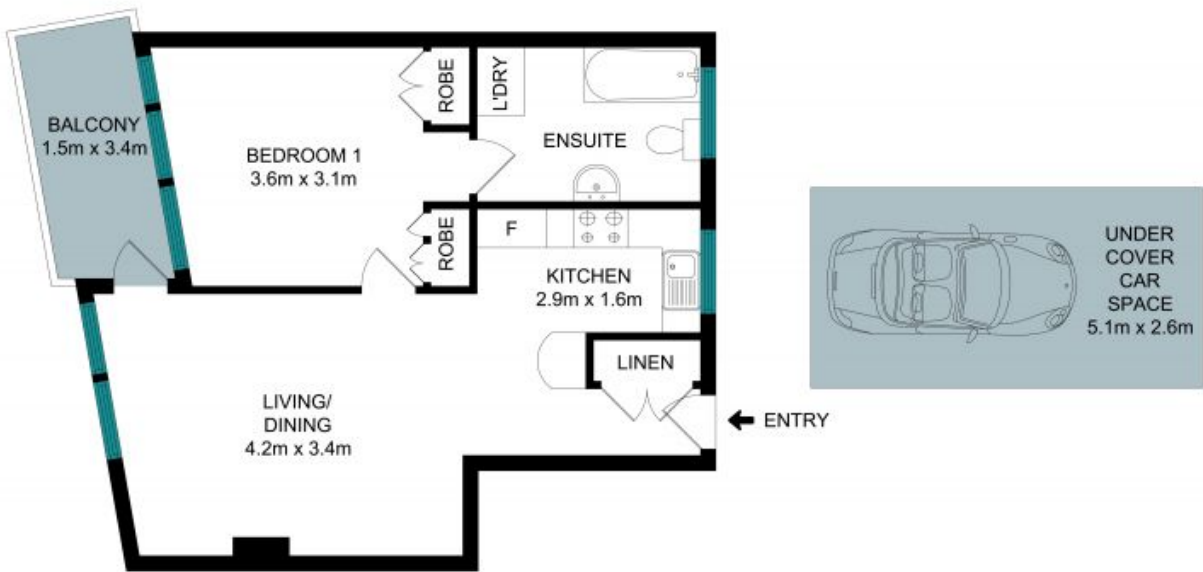
Contact Marize Bellomo



Bruce N. Huang

0468 694 060

å,fé²•æ-é»,,



The floor plan is not to scale, measurements are indicative and in meters. Exterior elements are not in position. Plan should not be relied on. Interested parties should make and rely on their own enquiries. All other information provided has been collected from reliable sources but cannot be guaranteed for accuracy.

14/2 Clifford Street, Mosman

