



23/18 Market Street Rockdale, NSW



### Location, lifestyle and low maintenance

This ultra-modern apartment is situated on Level 3 of the highly sought-after "SOHO" Apartments. Conveniently located within the heart of Rockdale with only moments to cafes, shops, library, train station, and bus interchange, this is an opportunity not to be missed.

**Price:** \$530 per week

**Bond:** \$2,120

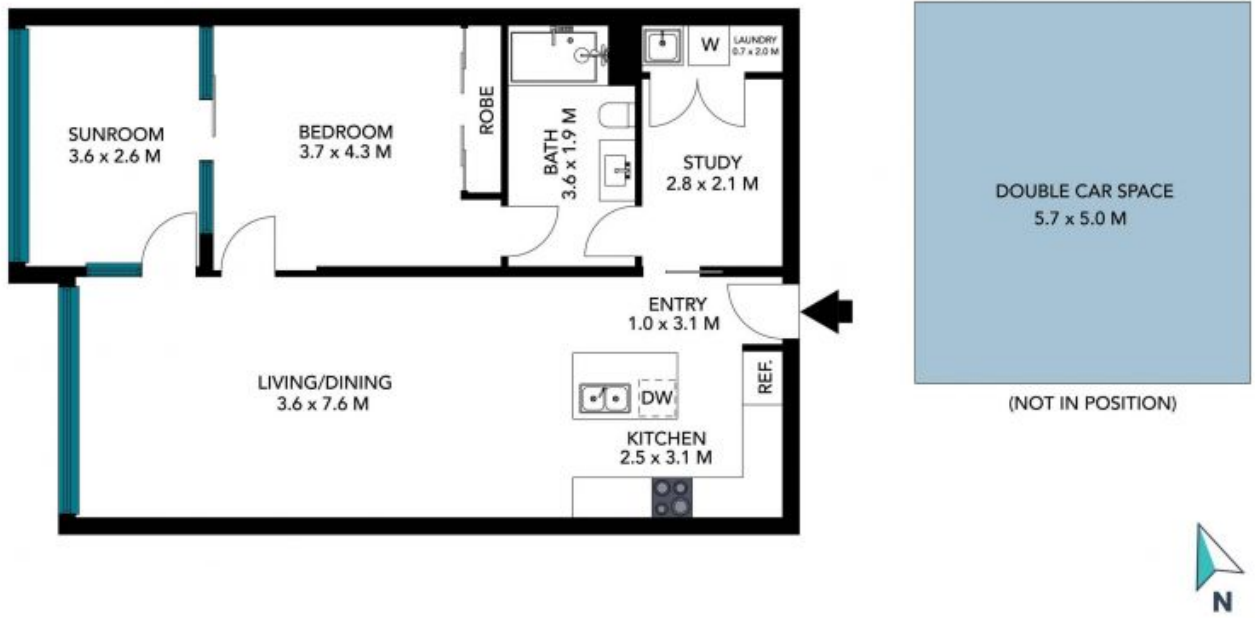
**Available Date:** 29/10/2022



**Natasha Stefanoski**

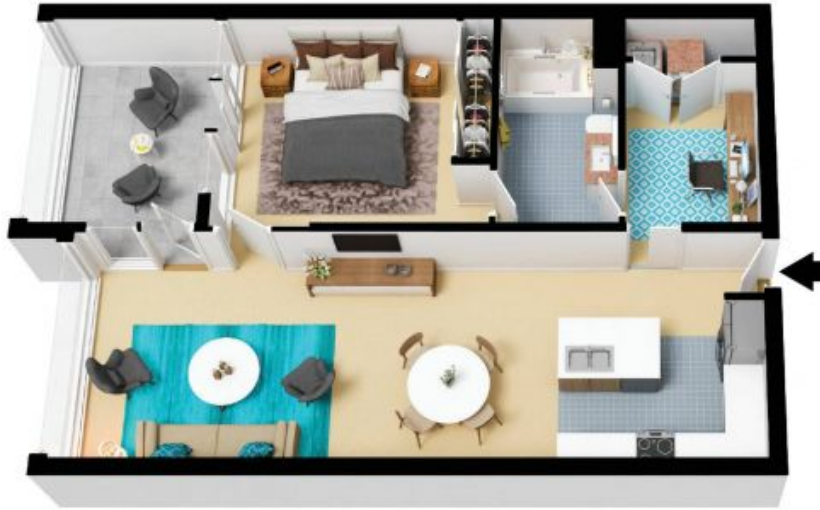
0421 237 342

23/18 Market Street  
Rockdale



The floor plan is not to scale, measurements are indicative and in metres. Exterior elements are not in position. Plans should not be relied on. Interested parties should make and rely on their own enquiries. All other information provided has been collected from reliable sources but cannot be guaranteed for accuracy.

23/18 Market Street  
Rockdale



The floor plan is not to scale; measurements are indicative and in metres. All features included in this 3D plan are for inspiration purposes only. This is not an exact replica of the property or the position of exterior elements. Plans should not be relied on. Interested parties should make and rely on their own enquiries.