



12 Lister Avenue Seaforth, NSW 4 2 2

Spectacular family coastal retreat with charm, space and north aspect

Expansive and supremely comfortable, this gorgeous family home captures the very essence of contemporary coastal style in a beautiful and highly-liveable haven. Situated on an impressive 753 sqm and offering a selection of superb indoor and outdoor entertaining areas to cater for all occasions and groups large and small, it delivers effortless flow from breezy open-plan interiors to an outdoor entertainers' oasis with an expansive wraparound deck surrounded by lush child-friendly lawns and landscaped gardens basking in a perfect northerly aspect.

Price: SOLD
Council Rates: \$557.00 p/q
Water Rates: \$144.00 p/q



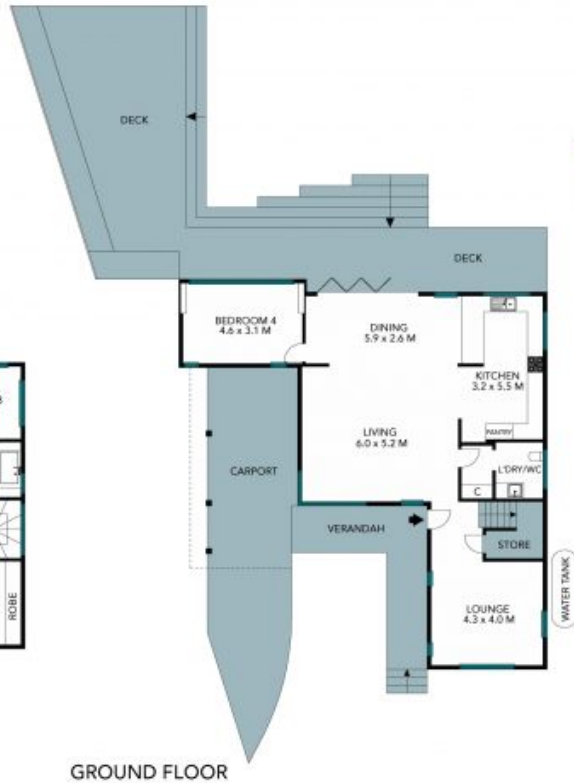
Maria Cassarino
0411 818 093



Julian Rowe
0412 544 448



FIRST FLOOR



GROUND FLOOR



SITE PLAN



Internal Living: 267 sqm approx
 External Living: 146 sqm approx
 Total Living Area: 353 sqm approx

The site plan and floor plan are not to scale, measurements are indicative and in metres. Bushes and trees are placed for illustration purposes. Plans should not be relied on. Interested parties should make and rely on their own enquiries. All other information provided has been collected from reliable sources but cannot be guaranteed for accuracy.

12 Lister Avenue, Seaforth

STONE



FIRST FLOOR

GROUND FLOOR



Internal Living: 267 sqm approx
External Living: 148 sqm approx
Total Living Area: 352 sqm approx

The floor plan is not to scale, measurements are indicative and in metres. All features included in this 3D plan are for inspiration purposes only. This is not an exact replica of the property or the position of exterior elements. Plans should not be relied on. Interested parties should make and rely on their own enquiries.

12 Lister Avenue, Seaforth

