



24 Cocupara Avenue Lindfield, NSW

3 

2 

2 

### A peaceful retreat with tranquil bush backdrop

Designed by renowned post-modernist architect Ian McKay to maximise the stunning natural setting and sunny north-to-rear aspect, this unique home promises a wonderfully relaxing lifestyle with gorgeous bush views from almost every room. Set on approximately 1170sqm in a quiet family-friendly cul-de-sac, it enjoys easy access to transport, village shops, prestigious schools and the CBD.



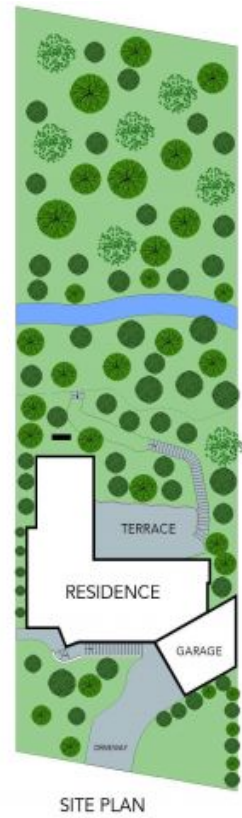
**Belinda Shearer**

0404 479 199



**Donna Fischer**

0424 163 144



The floor plan is not to scale, measurements are indicative and in metres. Exterior elements are not in position. Plans should not be relied on. Interested parties should make and rely on their own enquiries. All other information provided has been collected from reliable sources but cannot be guaranteed for accuracy.

24 Cocupara Avenue, Lindfield

