



4/464 Pacific Highway Lindfield, NSW



Spacious lifestyle apartment in a central address

A lifestyle of comfort and wonderful ease awaits astute buyers with this generous apartment positioned within a security, solid brick boutique block of six. Basking in an elevated aspect and blessed with timeless interiors and quality appointments, it's ready to move into and enjoys a convenient address just a short stroll (approx 450 mtrs) to Lindfield village and train station.

Price:

Contact Agent



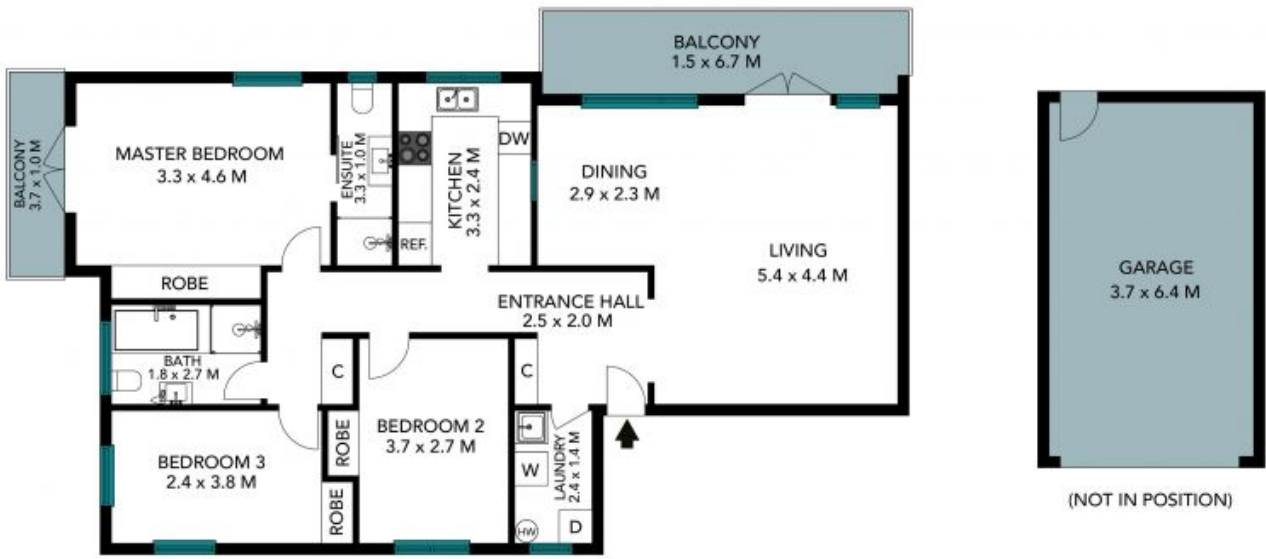
Richard Patterson

0416 228 187



Melanie Patterson

0416 228 387



The floor plan is not to scale; measurements are indicative and in metres. Exterior elements are not in position. Plans should not be relied on. Interested parties should make and rely on their own enquiries. All other information provided has been collected from reliable sources but cannot be guaranteed for accuracy.



4/464 Pacific Highway, Lindfield





The floor plan is not to scale, measurements are indicative and in metres. All features included in this 3D plan are for inspiration purposes only. This is not an exact replica of the property or the position of exterior elements. Plans should not be relied on. Interested parties should make and rely on their own enquiries.



4/464 Pacific Highway, Lindfield

