

88 O'Briens Road Figtree, NSW 5 3 2

Charming retreat amidst peaceful leafy surrounds

Promising a lifestyle of total tranquility, this character filled residence exudes and elegant charm while embracing views of the surrounding rainforest. Also offers exceptional scope for dual family living or generating rental income with the self-contained granny flat. Spanning a large block of 3,460sqm in a prized position, moments to Figtree Grove Shopping Centre and schools.

- Spacious designated living and dining rooms unfolding beneath skylights
- Private wraparound verandah overlooks yard with established vegetable gardens
- Ideal sized open plan kitchen complete with gas cooking and stainless steel ovens
- Four generous bedrooms include one with walk-in robe and access to the outdoors
- Study, two bathrooms, air conditioning, ceiling fans, garage, dual street entry
- Separate one bedroom granny flat has flowing lounge and kitchen plus bathroom
- Creates excellent appeal as a family retreat for dual family living or income
- Potential opportunity to subdivide an allocated area, subject to Council approval

Council rates \$538.55pq approx.

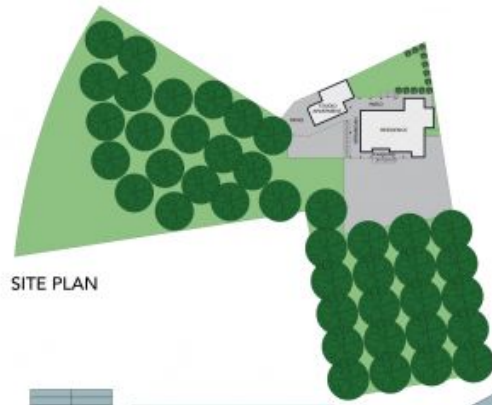
Price: \$1,150,000



Paul Piacentin
0411 754 884



Matthew Kasbarian
0432 521 051



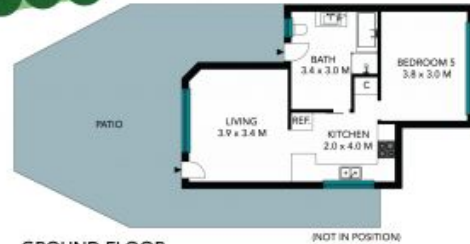
SITE PLAN



1ST FLOOR



GROUND FLOOR



GROUND FLOOR
STUDIO APARTMENT



LOWER GROUND FLOOR

The site plan and floor plan are not to scale, measurements are indicative and in metres. Bushes and trees are placed for illustration purposes. Plans should not be relied on. Interested parties should make and rely on their own enquiries. All other information provided has been collected from reliable sources but cannot be guaranteed for accuracy.





GROUND FLOOR



1ST FLOOR



GROUND FLOOR
STUDIO APARTMENT



LOWER GROUND FLOOR

The floor plan is not to scale, measurements are indicative and in metres. All features included in this 3D plan are for inspiration purposes only. This is not an exact replica of the property or the position of exterior elements. Plans should not be relied on. Interested parties should make and rely on their own enquiries.



88 O'Briens Road, Figtree

