



1101/2A Help Street Chatswood, NSW 3 2 2

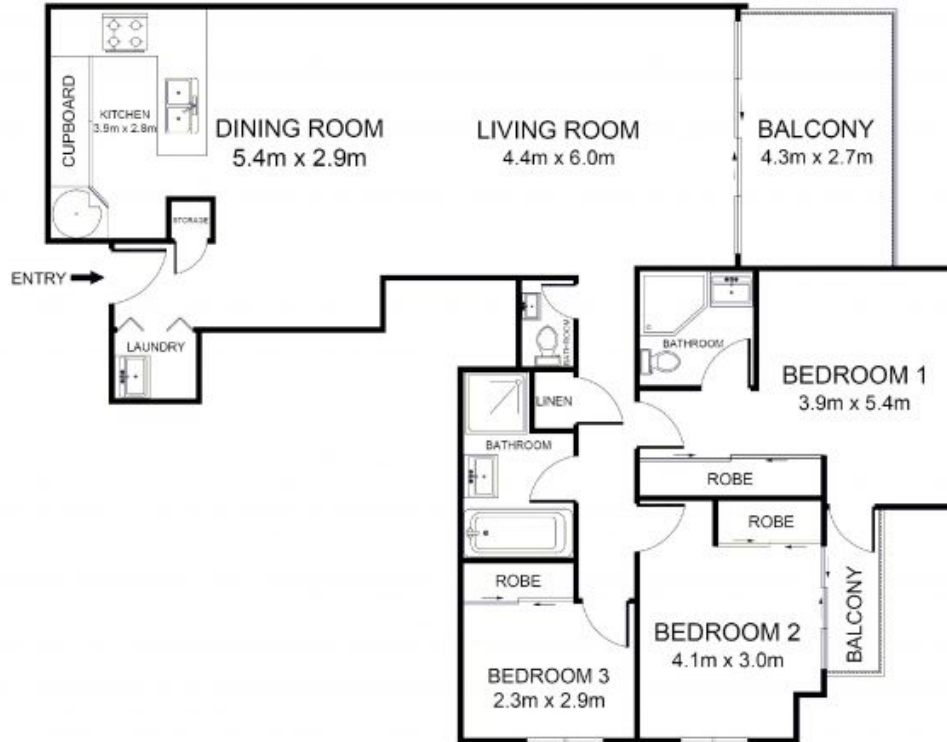
Luxury apartment footsteps to everything

Enjoying a prime north east position in the heart of Chatswood, this sprawling apartment delivers an elite lifestyle of quality and convenience across 116sqm approx. of space. The open plan lounge and dining leads out to the sunny north balcony with horizon views, while the central location presents shopping, restaurants, Concourse, cinemas and transport at your doorstep.

Price: Sold prior to auction



Bobby Shi
0404 823 911



1101/2A Help Street, Chatswood

INTERNAL AREA: 116 SQM APPROX.

DISCLAIMER: 3D Property View accepts no liability for the accuracy of details contained within our floor plans. All plans are drawn and also checked to the best of our ability, however, information contained in our floor plans such as area calculations are approximate, and have not been surveyed or drawn to scale. Our floor plans are for representational purposes only and should be used as such. Do not attempt to refer to our floor plans for structural or detailed information.

