



6/68 Crown Road Queenscliff, NSW



Ultra-chic beach pad set to a sweeping panorama

Urban chic and relaxed beach style collide in this beautifully reimagined boutique apartment that takes in sweeping 180 degree panoramas from the ocean to the North Shore skyline as its backdrop. Showcasing modern open plan design aesthetics and meticulously crafted with a professional's eye for detail, its sought-after lifestyle address is within a five minute stroll of Queenscliff Beach as a well as Freshwater Village and Beach.

Price: \$830,000
Council Rates: \$359.00 p/q
Water Rates: \$142.00 p/q
Strata Rates: \$816.00 p/q



Eddy Piddington

0414 333 907



Michael Egan

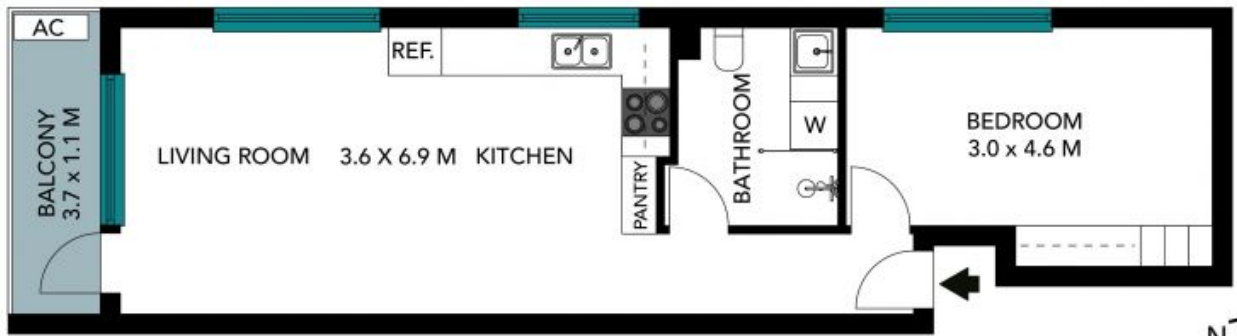
0499 172 009



(NOT IN POSITION)



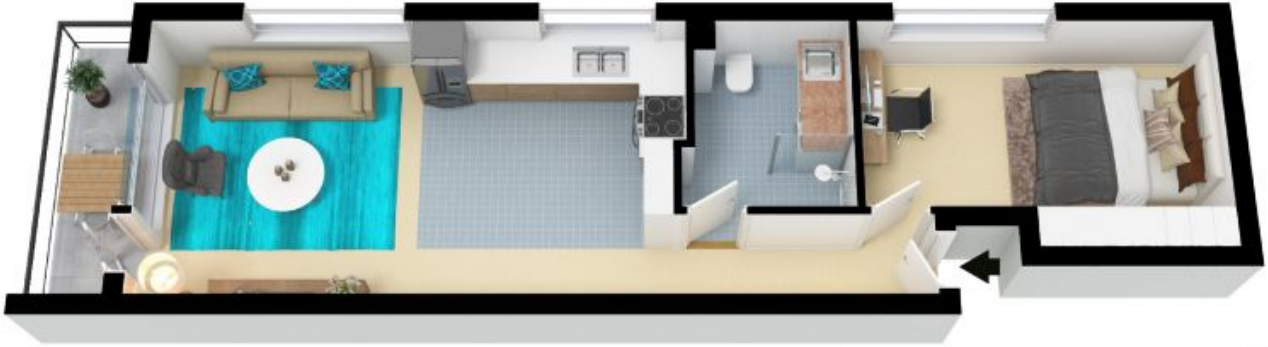
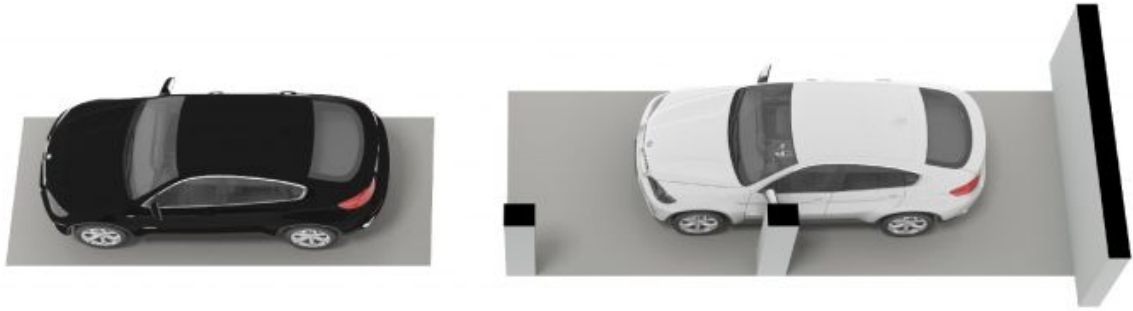
(NOT IN POSITION)



The floor plan is not to scale, measurements are indicative and in metres. Exterior elements are not in position. Plans should not be relied on. Interested parties should make and rely on their own enquiries. All other information provided has been collected from reliable sources but cannot be guaranteed for accuracy.

6/68 Crown Road, Queenscliff





The floor plan is not to scale, measurements are indicative and in metres. All features included in this 3D plan are for inspiration purposes only. This is not an exact replica of the property or the position of exterior elements. Plans should not be relied on. Interested parties should make and rely on their own enquiries.

6/68 Crown Road, Queenscliff

