



19 Patterson Road Heathcote, NSW 3 1 1

Easy-care living

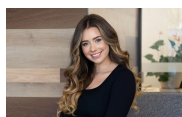
Beyond the welcoming facade of this bright and airy home lies an easy-care layout with modern updates throughout. Situated in an ideal location, this beautifully presented family home is within close proximity to Heathcote train station, schools, local playgrounds, national parks and various local amenities...

Price: Guide \$1,050,000 - \$1,150,000



Gerard Foote

0433 421 333



Mary Orfanos

0422 889 000



ADDRESS :
19 Patterson Road, HEATHCOTE

DISCLAIMER: THIS IS FOR ILLUSTRATIVE PURPOSES ONLY. ALL DIMENSIONS ARE APPROXIMATE AND IT DOES NOT CONSTITUTE PART OF ANY LEGAL DOCUMENTS.