



16/3-5 Copeland Road Beecroft, NSW



### Brand new luxury villa in boutique over-55s estate

Downsizers not wanting to compromise on space, quality or independence will be impressed by the scale and finishes of this sumptuous villa in Beecroft's newly completed over 55's 'Copeland Greens' garden estate. An exclusive development envisioned by architect Paul Meyer, the boutique village-like complex assures a lifestyle of deluxe low maintenance living with a prestigious address.

**Price:** Sold by Graham Black 0400 381 217  
**Council Rates:** \$333.00 p/q  
**Water Rates:** \$144.00 p/q  
**Strata Rates:** \$870.00 p/q



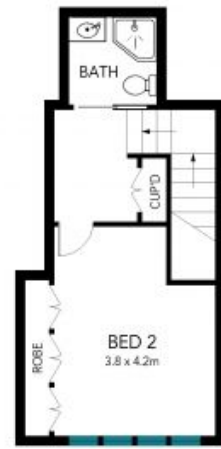
**Graham Black**

0400 381 217



**Kevin Dearlove**

0403 338 302



The floor plan is not to scale; measurements are indicative and in metres. Exterior elements are not in position. Plans should not be relied on. Interested parties should make and rely on their own enquiries.

16/3-5 Copeland Road, Beecroft

STONE

