

13/25 Woodlawn Avenue Mangerton, NSW 3 2 2

Freshly presented residence for modern living

Capturing views towards the Mount Keira escarpment from a north aspect, this contemporary freestanding townhouse complements house-like proportions with immaculate freshly updated interiors. It's in a boutique gated complex of 16, appealing to first homebuyers and families alike with its proximity to The Illawarra Grammar School, primary schools and freeways offering easy links to Sydney.

Price: \$796,500



Neil Webster

0439 028 748



Susie Bampton

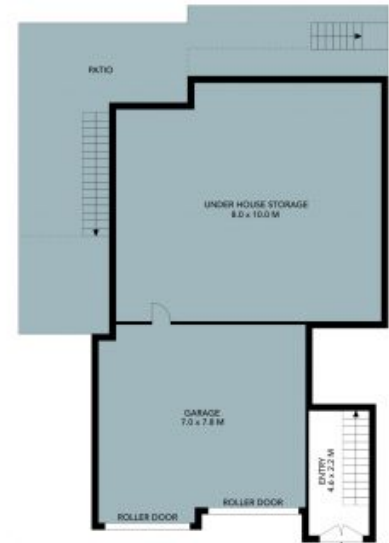
0402 248 619



SITE PLAN



1ST FLOOR



GROUND FLOOR

The site plan and floor plan are not to scale, measurements are indicative and in metres. Bushes and trees are placed for illustration purposes. Plans should not be relied on. Interested parties should make and rely on their own enquiries. All other information provided has been collected from reliable sources but cannot be guaranteed for accuracy.



13/25 Woodlawn Avenue, Mangerton





1ST FLOOR



GROUND FLOOR

The floor plan is not to scale, measurements are indicative and in metres. All features included in this 3D plan are for inspiration purposes only. This is not an exact replica of the property or the position of exterior elements. Plans should not be relied on. Interested parties should make and rely on their own enquiries.



13/25 Woodlawn Avenue, Mangerton

