

14 Greengate Road Killara, NSW



### Premier location with amazing possibilities

Enjoying a blue-ribbon east side location with walk to rail, this full brick character home showcases an adaptable single level layout complimented by a sunny north to rear aspect on a 872.6sqm approx. parcel, with car access to Greengate Lane. Free of conservation restraints, the home presents an ideal opportunity to live in or lease out in the short term, then renovate or rebuild in the future (STCA).



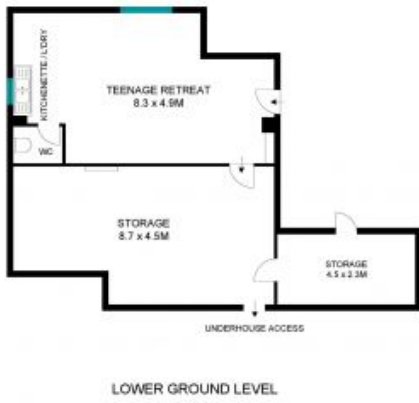
**Matt Payne**

0435 825 242



**Ryan Woo**

0410 884 680



The site plan and floor plan are not to scale. Measurements are indicative in meters. Bushes and trees are placed for illustration purposes. Plans should not be relied on. Interested parties should make and rely on their own inquiries. All other information provided has been collected from reliable sources but cannot be guaranteed for accuracy.

14 Greengate Road, Killara

