



ME 801/1 Mooltan Avenue Macquarie Park, NSW



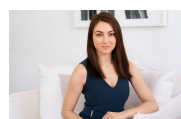
Unbelievably large one bedroom unit with study

Located on level eight in the Melbourne building of Macquarie park village. Offering quality finishes, resort style living and ultra convenient location, literally moments from Macquarie University, train station and shopping centre.

Price: Deposit Taken - \$485 per week

Bond: \$1,920

Available Date: 22/04/2021



Sarah Hastings

02 8893 2218