



13 Mount Baker Road Millfield, NSW 4 2 2

### Country homestead, designer style

Placed amid a tree-studded acreage in Mount View region, this superb haven promises blissful peace and privacy only disturbed by the incredible country views on offer. Interiors have been updated to deliver a thoroughly modern homestead of multiple living areas, four bedrooms, office and effortless connection to a wrap-around verandah, the outdoors, and plenty of areas to relax or entertain.

**Price:** Contact Agent  
**Council Rates:** \$2,250.15/year (approx)



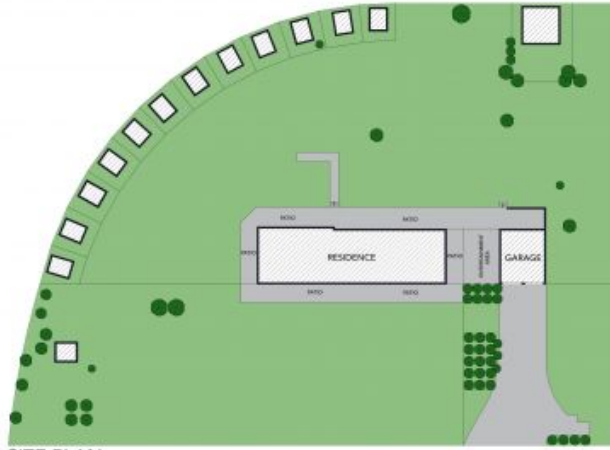
**Renee Bean-Wyper**

0403 325 076



**Shannon O'Hara**

0409 348 248



SITE PLAN



The site plan and floor plan are not to scale, measurements are indicative and in metres. Shales and trees are placed for illustration purposes. Plans should not be relied on. Interested parties should make and rely on their own enquiries. All other information provided has been collected from reliable sources but cannot be guaranteed for accuracy.

13 Mount Baker Rd, Millfield





The floor plan is not to scale, measurements are indicative and in metres. All features included in this 3D plan are for inspiration purposes only. This is not an exact replica of the property or the position of exterior elements. Plans should not be relied on. Interested parties should make and rely on their own enquiries.

13 Mount Baker Rd, Millfield

