



2/2-26 Haldon Street Lakemba, NSW

2 2 1

Live in style with everything on your doorstep

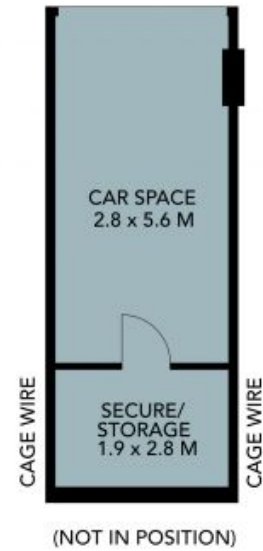
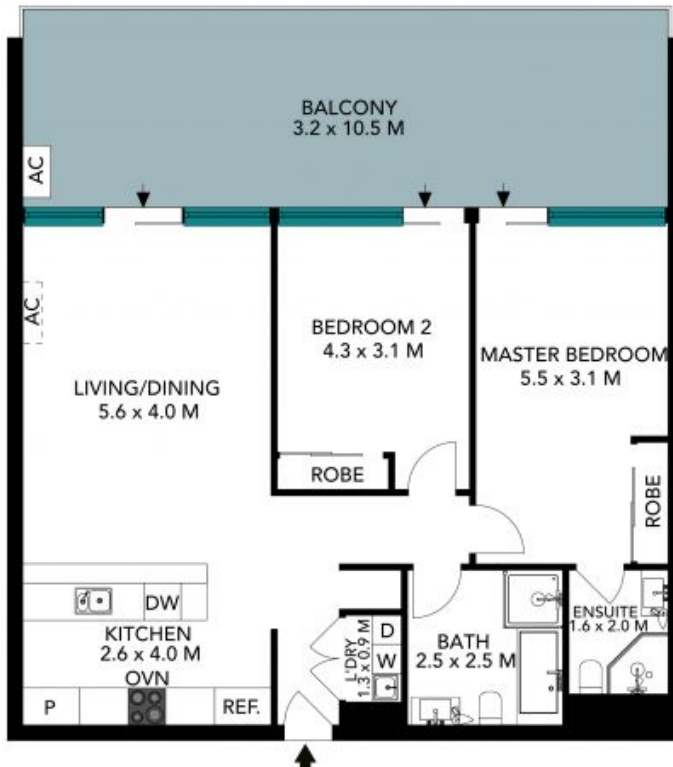
Modern and incredibly convenient, this spacious architecturally-designed pad is just 15km from the CBD. Catch the lift from Woolworths up to your first-floor unit, and unpack in its stylish kitchen and open-plan living area. Blipping the radar of inner-west buyers in search of greater value, it's a three-minute stroll from trains, at the heart of a multicultural dining hub.

Price: \$562,000



Terry Gareb

0424 523 630



The floor plan is not to scale, measurements are indicative and in metres. Colour statements are not in position. Plans should not be relied on. Interested parties should make and rely on their own enquiries. All other information provided has been collected from reliable sources but cannot be guaranteed for accuracy.

2/2-26 Haldon Street, Lakemba





The floor plan is not to scale, measurements are indicative and in metres. All features included in this 3D plan are for inspiration purposes only. This is not an exact replica of the property or the position of exterior elements. Plans should not be relied on. Interested parties should make and rely on their own enquiries.

2/2-26 Haldon Street, Lakemba

