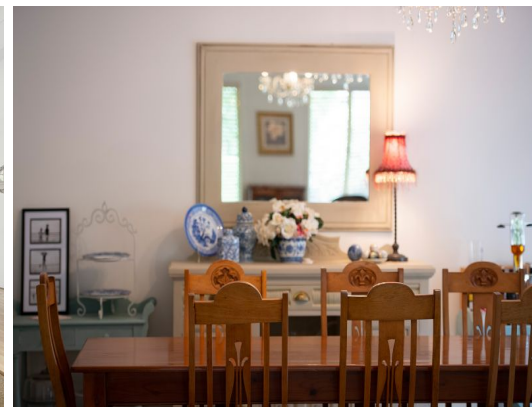


STONE



6 Acer Court Bowral, NSW



Pear Tree Hill

Nestled in a quiet, leafy cul-de-sac in East Bowral, this beautiful home is an absolute delight to behold. There is an immediate sense of arrival as you enter via the circular driveway and discover a hidden sanctuary - and this is just the beginning of what awaits.

Price: Price guide \$1,670,000
Council Rates: \$2,076.00/year (approx)
Water Rates: \$1,052.00/year (approx)



Anita Roelevink

0409 367 678



The floor plan is not to scale, measurements are indicative and in metres. Exterior elements are not in position. Plans should not be relied on. Interested parties should make and rely on their own enquiries. All other information provided has been collected from reliable sources but cannot be guaranteed for accuracy.

6 Acer Court, Bowral





The floor plan is not to scale, measurements are indicative and in metres. All features included in this 3D plan are for inspiration purposes only. This is not an exact replica of the property or the position of exterior elements. Plans should not be relied on. Interested parties should make and rely on their own enquiries.

6 Acer Court, Bowral

