



354A Pacific Highway Lindfield, NSW

### Office space suitable for a range of different operations

Located within metres of Lindfield Station and bus hub, and set within a busy restaurant and shopping district, these premises are suitable for a range of businesses.

**Council Rates:** \$1,757.00 p/q

**Water Rates:** \$0.00 p/q

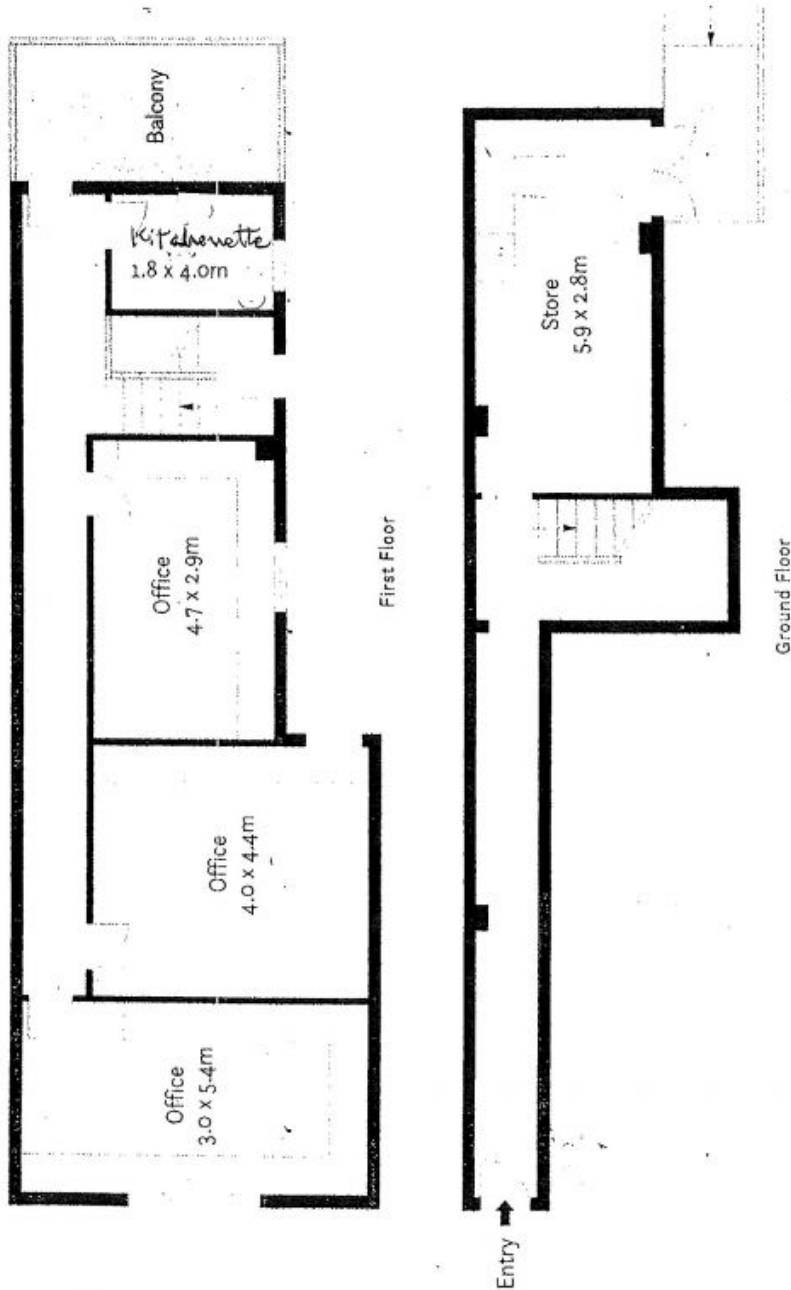
**Strata Rates:** \$0.00 p/q



**Annabelle Morris**

0429 028 588

354 A Pacific Hwy, Lindfield.



Internal : 107 sqm

Site plan (not to scale)

