



6/2 Campbell Parade Manly Vale, NSW



Stylish lifestyle pad in central park-side setting

Streamline open floor design and crisp contemporary finishes combine with an extra-wide balcony and sublime leafy outlooks over the adjoining parkland to provide a tranquil and luxurious retreat in one of Sydney's fastest growing lifestyle hotspots. Offering supreme peace and privacy, it is within a short stroll of express B-line city buses, supermarkets and cafes, and only a stone's throw to Warringah Mall and beaches.

Price: \$860,000
Council Rates: \$359.00 p/q
Water Rates: \$144.00 p/q
Strata Rates: \$735.00 p/q



Eddy Piddington

0414 333 907



Michael Egan

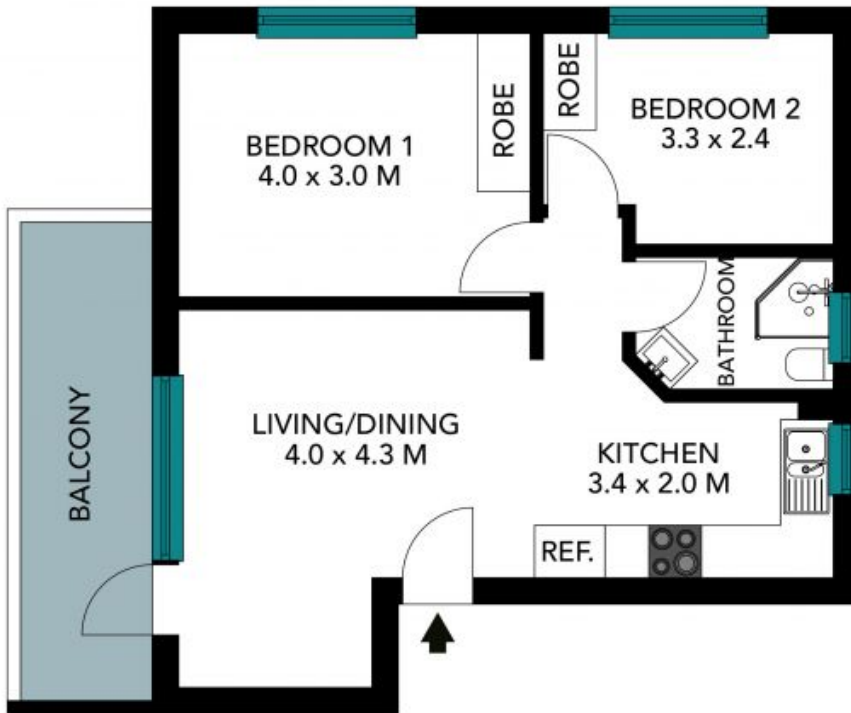
0499 172 009



The floor plan is not to scale, measurements are indicative and in metres. All features included in this 3D plan are for inspiration purposes only. This is not an exact replica of the property or the position of exterior elements. Plans should not be relied on. Interested parties should make and rely on their own enquiries.

6/2 Campbell Parade, Manly Vale





The floor plan is not to scale, measurements are indicative and in metres. Exterior elements are not in position. Plans should not be relied on. Interested parties should make and rely on their own enquiries. All other information provided has been collected from reliable sources but cannot be guaranteed for accuracy.

6/2 Campbell Parade, Manly Vale

