



801/7 Keats Avenue Rockdale, NSW

2 2 1

### Resort living footsteps from all amenities

Perched on the eighth floor, this sun-drenched north-west facing apartment brings a holiday feel to everyday life, thanks to a communal pool, gym, and spa. Its expansive open-plan living zone extends onto a large balcony with elevated district views. Stroll to Rockdale Station, shops and cafes from this ultra-convenient location, just 2.5km from the shores of Lady Robinson's Beach.

**Price:** \$550 per week

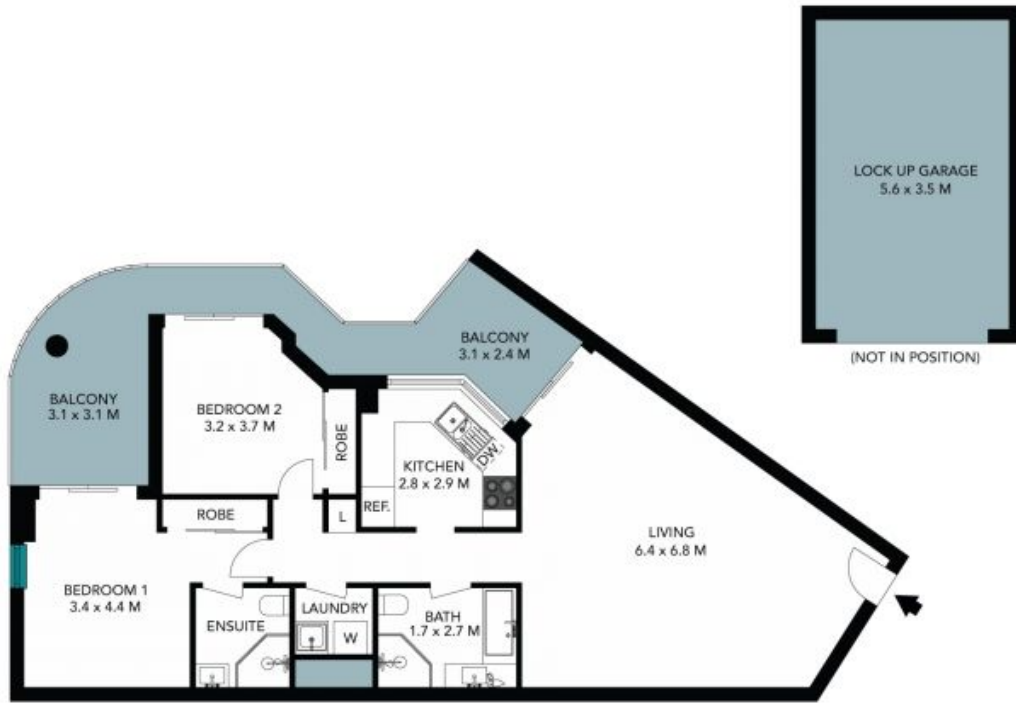
**Bond:** \$2,200

**Available Date:** 25/07/2022



**Natasha Stefanoski**

0421 237 342



The floor plan is not to scale, measurements are indicative and in metres. Certain elements are not in position. Plans should not be relied on. Interested parties should make and rely on their own enquiries. All other information provided has been collected from reliable sources but cannot be guaranteed for accuracy.