



101/15-19 Bruce Street Brighton-Le-Sands, NSW



Contemporary luxury by the sea

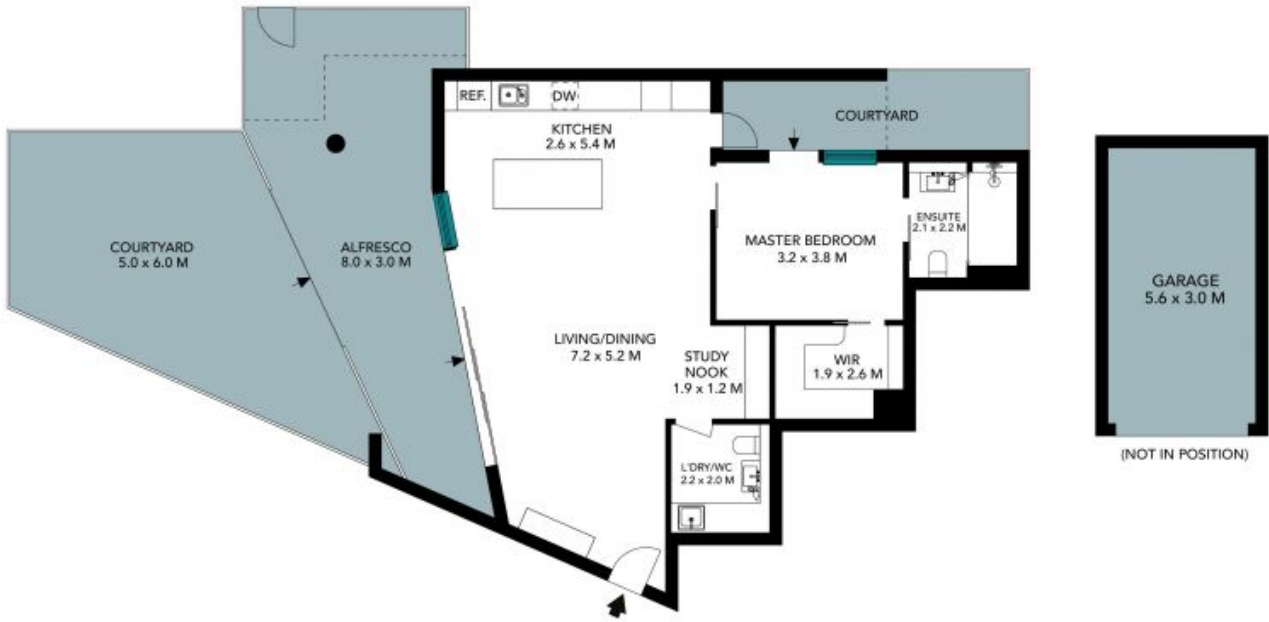
Delivering an unparalleled level of style and quality, this modern courtyard apartment is a light filled retreat featuring contemporary living spaces in a single level design, positioned only moments from Lady Robinsons Beach. The free flowing and over scaled apartment offers an open living and dining area, separate study nook, flowing seamlessly to the undercover entertaining terrace that provides comfort, privacy and space. Located in the highly sought after luxurious Ciel building, this apartment is the perfect fusion of designer living and sophisticated low maintenance living with superlative finishes.

Price: RECORD SALE \$1,000,000 | Ray Fadel
Council Rates: \$300.00 p/q
Water Rates: \$150.00 p/q
Strata Rates: \$846.00 p/q



Ray Fadel

0413 177 739



The floor plan is not to scale, measurements are indicative and in metres. Exterior elements are not in position. Plans should not be relied on. Interested parties should make and rely on their own enquiries. All other information provided has been collected from reliable sources but cannot be guaranteed for accuracy.

101/15-19 Bruce Street, Brighton-Le-Sands





The floor plan is not to scale, measurements are indicative and in metres. All features included in this 3D plan are for inspiration purposes only. This is not an exact replica of the property or the position of exterior elements. Plans should not be relied on. Interested parties should make and rely on their own enquiries.

101/15-19 Bruce Street, Brighton-Le-Sands

