



105 Thomas Mitchell Road Killarney Vale, NSW 4 2 3

### Spacious Single Level Home, 7 Minutes to Shelly Beach

This spacious single level home creates an immediate impression of relaxed comfort and space, with flowing interiors that lead onto a private outdoor entertaining area. Every room in the home is light filled, with high ceilings that give the home a real sense of grandeur throughout. Further enhanced by a grassed and secure yard for the kids and pets to play safely and conveniently located from an array of shops including supermarket, chemist, news agency, restaurants, cafes, bakery and just a short 7 minute drive to Shelly Beach.

**Price:** \$855,000



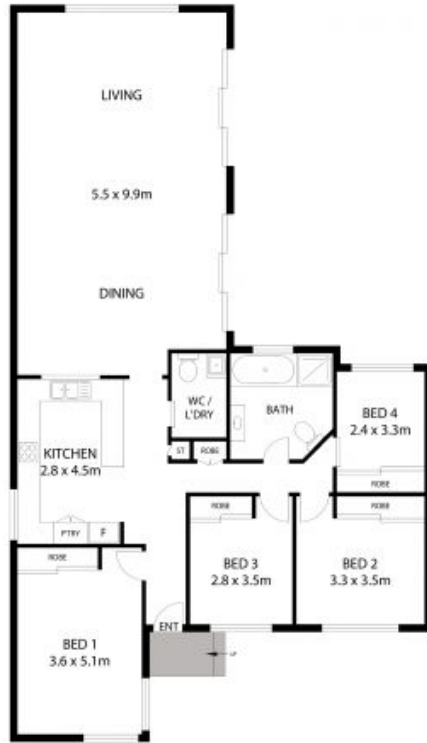
**Shanti Santhou**

0437787221



**Shanti Santhou**

0437787221



**SITE PLAN**  
(Not to Scale)

All dimensions herein are approximate and gathered from sources believed to be reliable. Whilst every effort is made for the accuracy of our floor plans, interested parties should rely on their own enquiries.

**WISEBERRY** 105 THOMAS MITCHELL ROAD, KILLARNEY VALE

Internal Area: 144m<sup>2</sup>  
Land Area: 556m<sup>2</sup>