



27/3 Suttor Road Moss Vale, NSW

3  2  2 

### Easy living lifestyle

This stylish townhouse is well-positioned in the popular 'Tatton Park' complex and will delight you from the moment you step inside. Thoughtfully designed and superbly appointed, the light-filled residence offers a beautiful blend of indoor and outdoor living. The low maintenance pad ? curated for young professionals, retirees or small families.

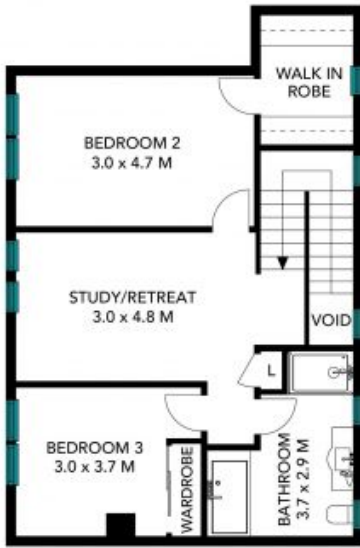
**Price:** \$620 per week

**Available Date:** 30/04/2021

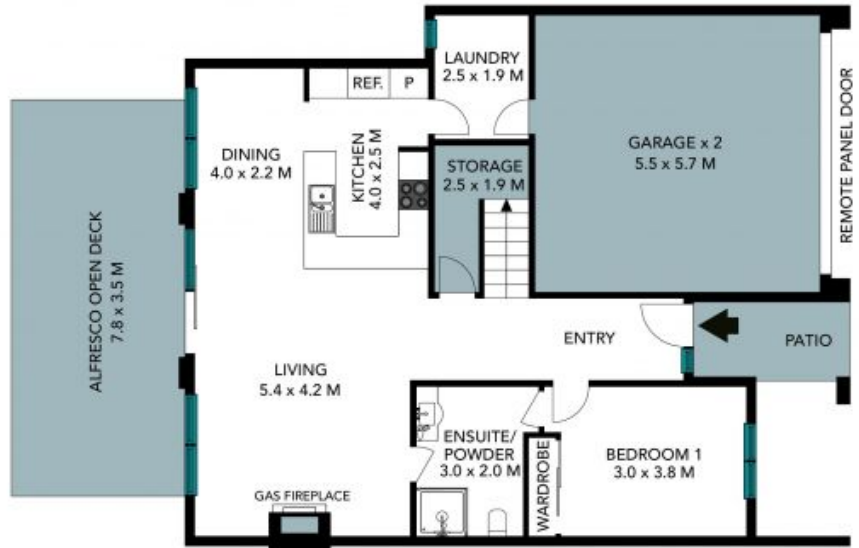


**Phoebe Priestley**

(02) 4861 3709



UPPER FLOOR



GROUND FLOOR

The floor plan is not to scale, measurements are indicative and in metres. Exterior elements are not in position. Plans should not be relied on. Interested parties should make and rely on their own enquiries. All other information provided has been collected from reliable sources but cannot be guaranteed for accuracy.

27/3 Suttor Road, Moss Vale





UPPER FLOOR



GROUND FLOOR

The floor plan is not to scale, measurements are indicative and in metres. All features included in this 3D plan are for inspiration purposes only. This is not an exact replica of the property or the position of exterior elements. Plans should not be relied on. Interested parties should make and rely on their own enquiries.

27/3 Suttor Road, Moss Vale

