



20 Gretchen Avenue Earlwood, NSW

3

1

1

### Character, Charm & Potential

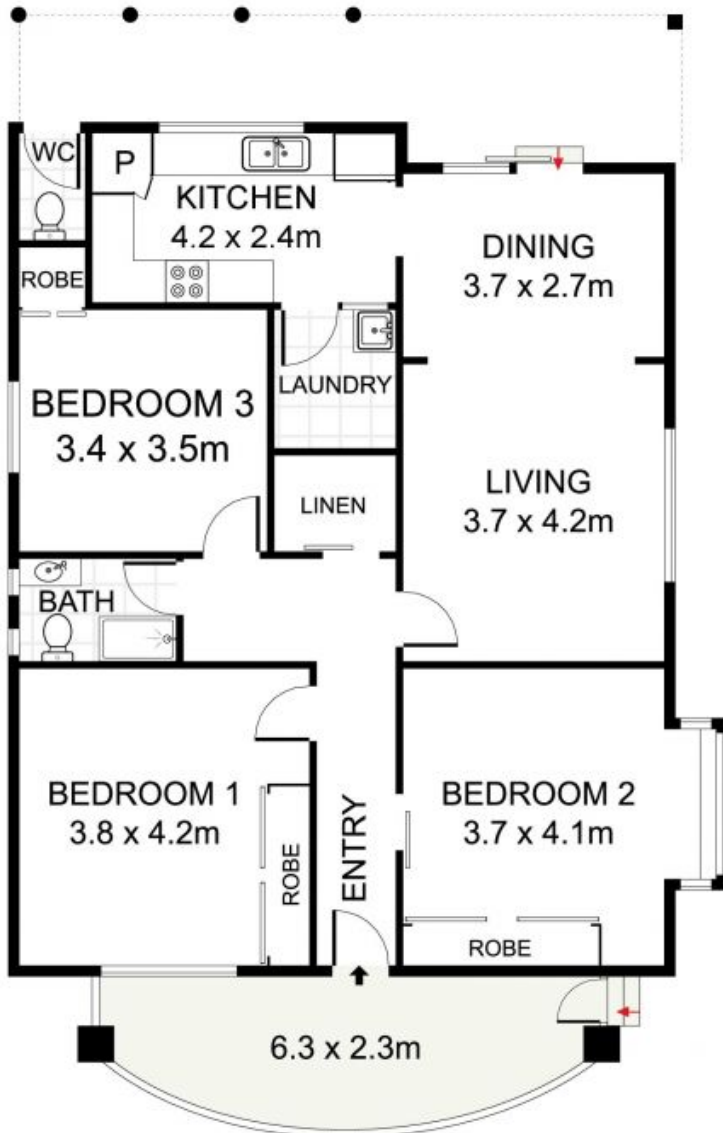
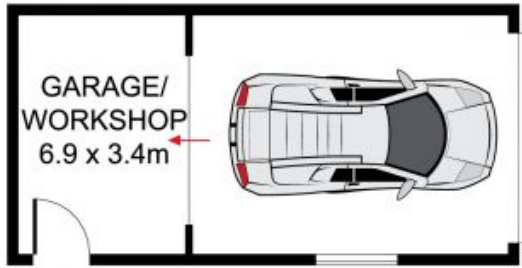
This authentic freestanding home provides the ideal foundation and opportunity to capitalise on its many creative possibilities while retaining its exquisite period charm and attractive street presence.

Price: \$1,800,000

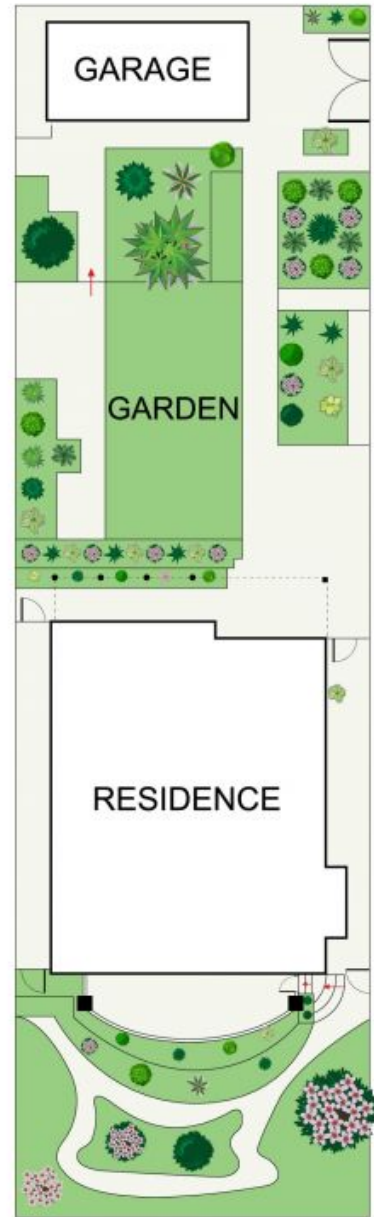


**George Karafotias**

0405 436 336



GROUND FLOOR



SITE PLAN  
(NOT TO SCALE)



20 Gretchen Avenue, Earlwood

DISCLAIMER: PLANS SHOWN ARE FOR PRESENTATION PURPOSES AND ARE NOT PART OF ANY LEGAL DOCUMENT. ALL MEASUREMENTS AND FIGURES ARE APPROXIMATE.